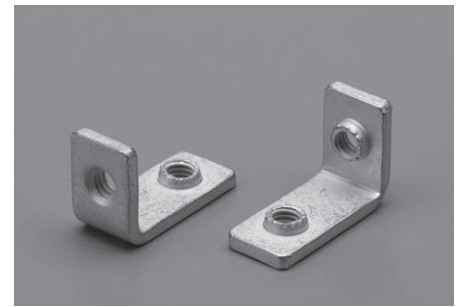


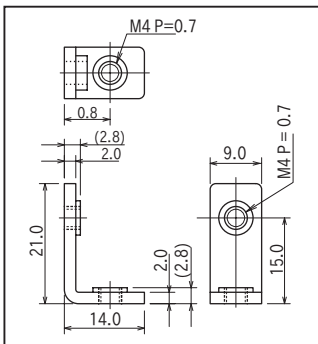
**Printed circuit board fitting clasp**

**BDA-15-M4 (10pcs/pack)**

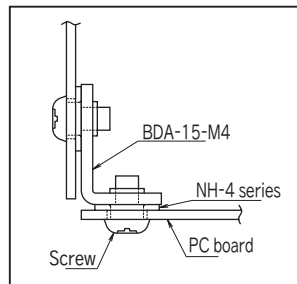
- Use this item for fitting the printed circuit boards vertically.
- Besides of fitting the PCBs, this item also has electrical function (Recommended to use with NH series ).
- Material: Copper
- Finish: Tin plating over nickel base
- Rated current: 40A



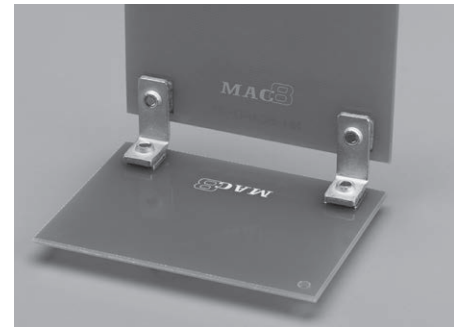
■ Dimension



■ Example of usage



When using with NH-4



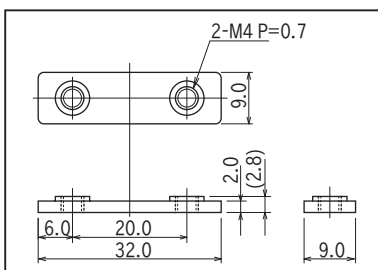
**Printed circuit board fitting clasp**

**BDB-20-M4 (10pcs/pack)**

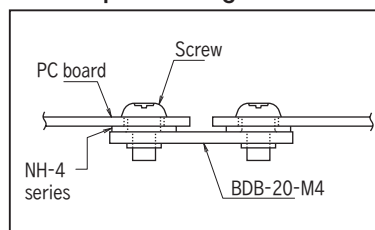
- Use this item for fitting the printed circuit boards horizontally.
- Besides of fitting the PCBs, this item also has electrical function (Recommended to use with NH series ).
- Material: Copper
- Finish: Tin plating over nickel base
- Rated current: 40A



■ Dimension



■ Example of usage



When using with NH-4

