

If it is weak to heat, you can put it later!

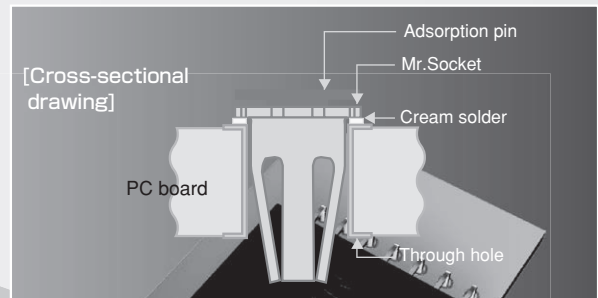
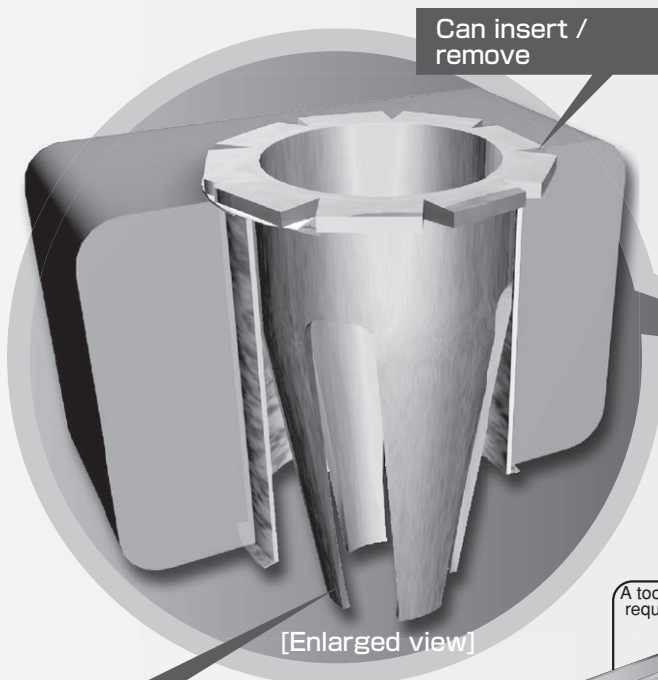
A through hole is changed to a socket!

**Mr.Socket**

**AF series**

[Can be used by a chip mounter]

Parts can be fit without soldering.



Can be used for a chip mounter

A tool in response to many requests is now available!

Tool for pulling out adsorption pin for AF series

Model: AF-JIG

A part which is weak to heat can be put on the PC board later!

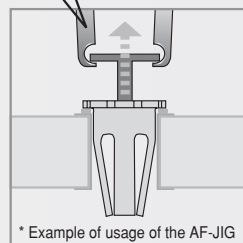
A through hole can be changed to a socket. It can be inserted / removed.



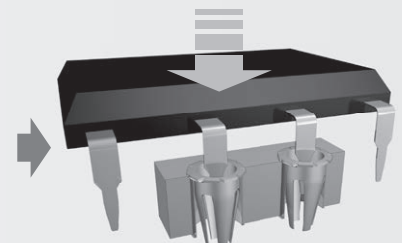
Automatic mounting by a chip mounter



Soldering by reflow



Remove the adsorption pin. (Push from the back side and remove vertically.)

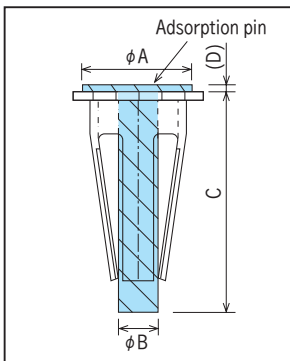
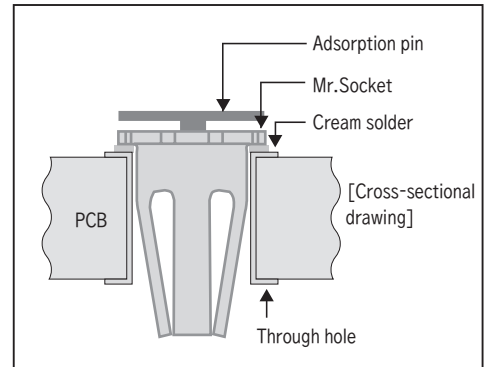


A through hole changes to a socket.

Mr.Socket

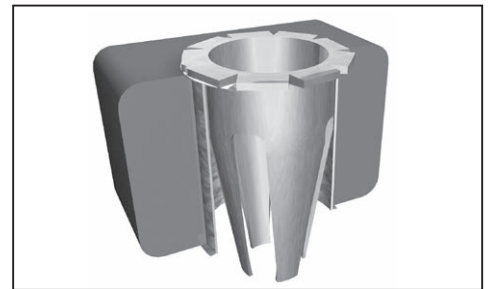
AF series

- By automatically mounting the AF series to a through hole with a mounter and carry out reflow, a through hole changes to a socket.
- Parts can be protected from the heat increase due to lead free soldering.
- Various parts (wire diameter:  $\phi$  0.40 to  $\phi$  1.0) can be mounted.
- Material: Beryllium copper (Adsorption pin: aluminum)
- Finish: Gold plating over nickel base
- Contact resistance: 10m  $\Omega$  or less
- Rated current:
  - AF-0.5 ( ) ... 2A
  - AF-0.7 ( ) ... 4A
  - AF-0.9 ( ) ... 6A
- Insertion / removal durability : 100 cycles
- Recommended metal mask thickness: 100  $\mu$ m to 150  $\mu$ m
- Adaptive thickness of PC board: Any thickness
- Operating temperature range: - 40 to + 125 $^{\circ}$ C
- Please use the automatic recognition type of automatic mounter.



Adsorption pin state

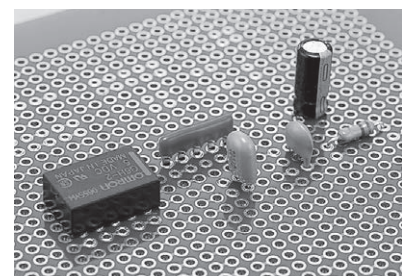
Part No.	A	B	C	(D)
AF-0.5 ( )	1.3	0.45	2.9	0.18
AF-0.7 ( )	1.6	0.6	3.4	0.15
AF-0.9 ( )	2.0	0.8	4.0	0.25



■ Part No.

Part No.	Adaptive male pin diameter	Insertion forces (average value: g)	Removal forces (average value: g)	Package state
AF-0.5 (L)	$\phi$ 0.45 to $\phi$ 0.6	50	30	1000pcs/reel
AF-0.5 (H)	$\phi$ 0.40 to $\phi$ 0.6	250	130	1000pcs/reel
AF-0.7 (L)	$\phi$ 0.6 to $\phi$ 0.8	90	50	1000pcs/reel
AF-0.7 (H)	$\phi$ 0.6 to $\phi$ 0.8	700	530	1000pcs/reel
AF-0.9 (L)	$\phi$ 0.8 to $\phi$ 1.0	100	70	450pcs/reel
AF-0.9 (H)	$\phi$ 0.8 to $\phi$ 1.0	280	200	450pcs/reel

■ Example of usage



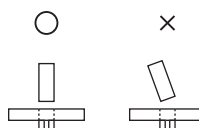
- (L): Type with weak insertion/removal forces
- (H): Type with strong insertion/removal forces
- The insertion/removal forces described above indicate the median value of the male pin.

● We also offer bulk package. (It does not include adsorption pins.)  
 Example of bulk package Part no: AF-0.5(L)-B (100 pieces are included in 1 pack.)

↑ Please put "B" .

■ Instructions for use

Insert a male pin vertically.  
 Do not twist it to the left and right after inserting.  
 (It weakens the insertion/removal forces.)



Jig for pulling out adsorption pins

**AF-JIG** (1 unit is included in 1 pack.)

Tool

