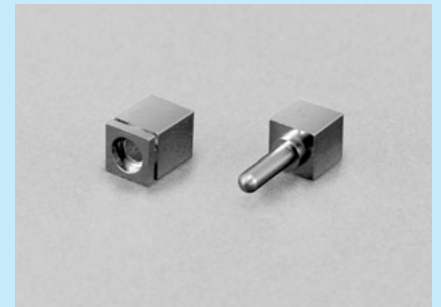
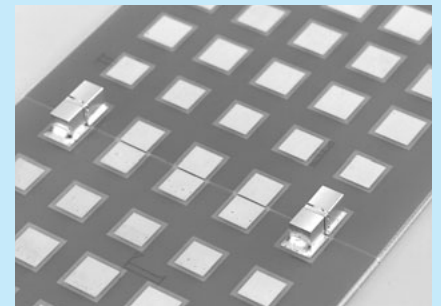
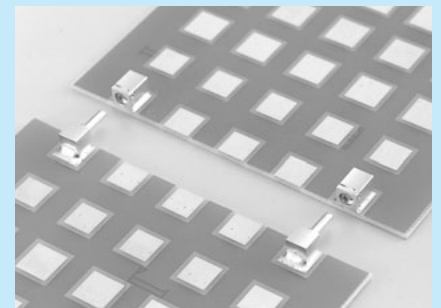


Parallel type power supply socket for surface mounting [HH-51] [HHO-51]

- This socket can connect the PC boards in parallel.
- This can supply power.
- Material
- HH-51 Body: Brass
Contact: Beryllium copper
- HHO-51: Brass
- Finish: Gold plating over nickel base
- Rated current: 20A
- Contact resistance: 10mΩ or less
- Insertion / removal forces: 150g or over
- Insertion / removal frequency: 100 times or over
- Adaptive male pin diameter: $\phi 1.7$ to $\phi 2.1$
- Operating temperature range: -40 to $+125^{\circ}\text{C}$



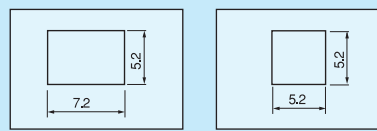
Example of usage



Part number

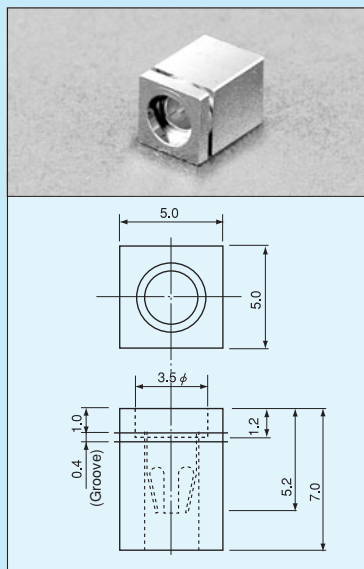
Part number	Package
HH-51	Bulk (100pcs/pack)
HH-51-T	Reel (300pcs/reel)
HHO-51	Bulk (100pcs/pack)
HHO-51-T	Reel (200pcs/reel)

Recommended land diameter

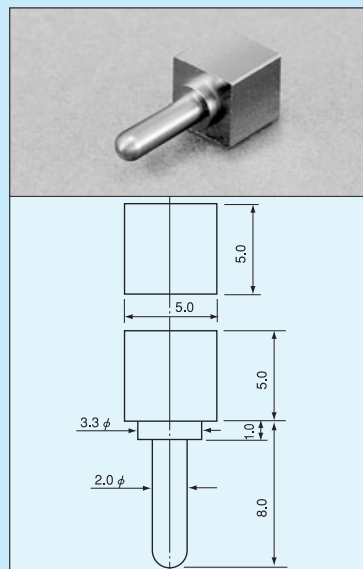


HH-51

HHO-51



Part number HH-51

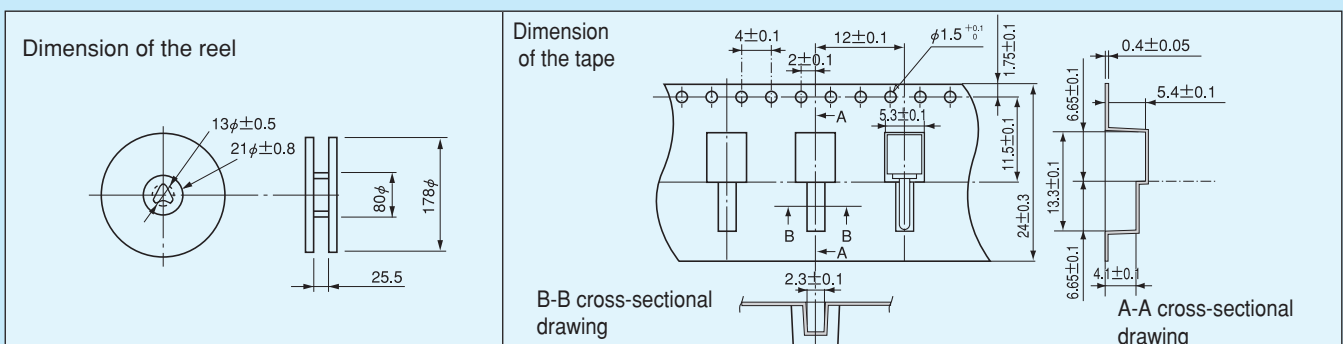


Part number HHO-51

Instructions for use

The grooved side of HH-51 is the direction for inserting the pin.

Dimension of the reel (HHO-51-T)



* The dimension of the reel for HH-51-T is the same as that for HH-5.

For surface mounting