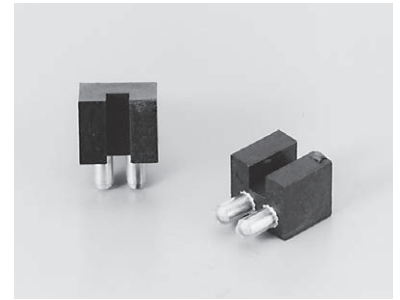


Vertical fitting mount for PC board

AG series (10pcs/pack)

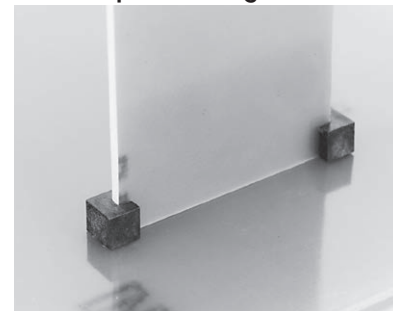
- This fitting mount is used for supporting when fitting a PC board vertically to a PC board.
- Material Resin part: PPS black (UL94V-0)
Pin part: Brass (Tin plating over nickel base)
- Operating temperature range: - 40 to + 125°C



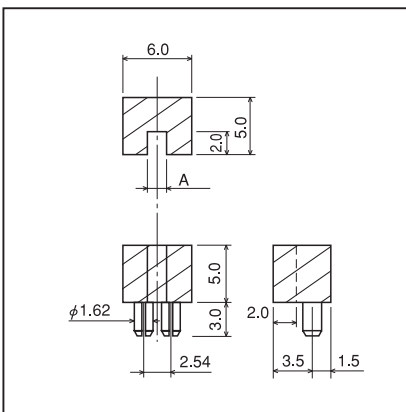
■ Part No.

Part No.	A	Adaptive printed board thickness
AG-0.6	0.7	0.6
AG-0.8	0.9	0.8
AG-1.0	1.1	1.0
AG-1.2	1.3	1.2
AG-1.6	1.7	1.6

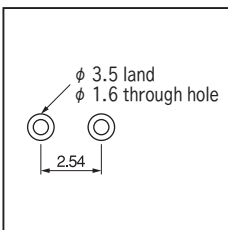
■ Example of usage



■ Dimension



■ Recommended land information



• Surface mount type is AGH serie.