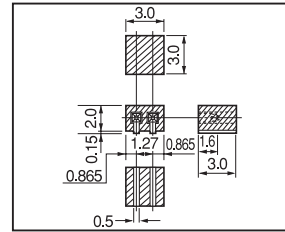


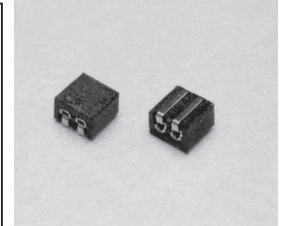
**Jumper socket for surface mounting**

**HHP series**

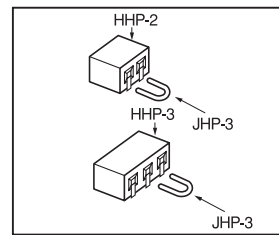
- By combining HHP series with JHP-3, switching is available.
- By inserting JHP-3, it is turned on. By pulling it out, it is turned off.
- Material
  - Contact part: Beryllium copper
  - Resin part: PCT black (UL94V-0)
- Finish
  - Contact part: Gold plating over nickel base
- Reflow can be used for this type.
- Rated current: 1A
- Insulation resistance: 500M Ω or over
- Withstand voltage: 500V AC, DC per minute
- Contact resistance: 10m Ω or less
- Insertion / removal forces: 50g or over
- Insertion / removal durability : 100 cycles
- Adaptive male pin diameter: φ 0.3
- Operating temperature range: - 40 to + 125°C



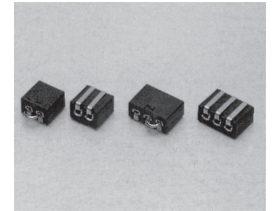
HHP-2



HHP-2



■ Example of usage

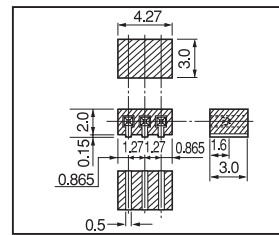


■ Part No.

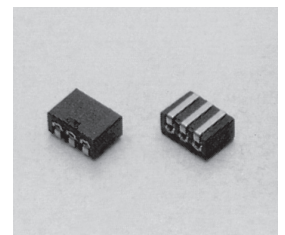
Part No.	Package
HHP-2	Magazine (100pcs/pack)
HHP-2-T	Reel (700pcs/reel)
HHP-3	Magazine (100pcs/pack)
HHP-3-T	Reel (700pcs/reel)

■ Instructions for use

As the crimping strength between the contact part and the resin part is weak, please apply an adhesive to the both sides (PC board and resin) and use.

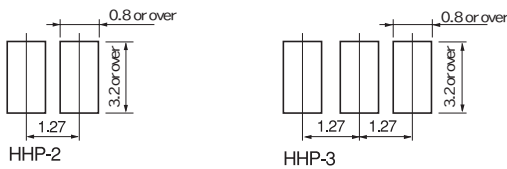


HHP-3

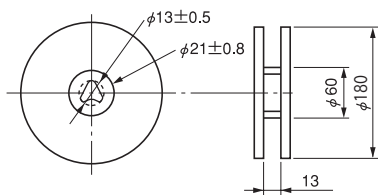


HHP-3

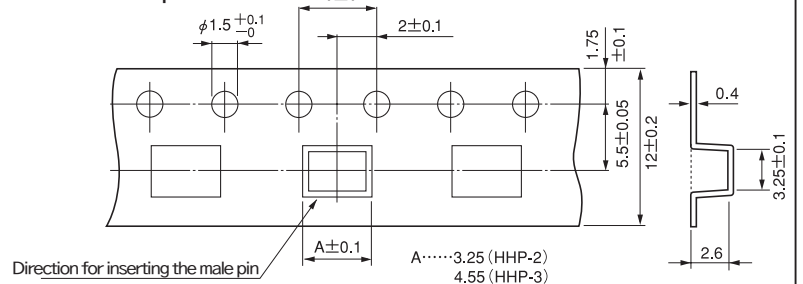
■ Recommended land information



Dimension of the reel



Dimension of the tape



**Jumper**

Part No.: **JHP-3** (100pcs/pack)

- This jumper is used for HHP-2 and HHP-3.
  - Material: Phosphor bronze
  - Finish: Gold plating over nickel base
  - Rated current: 1A
- Part No.: JHP-3

■ Example of usage

