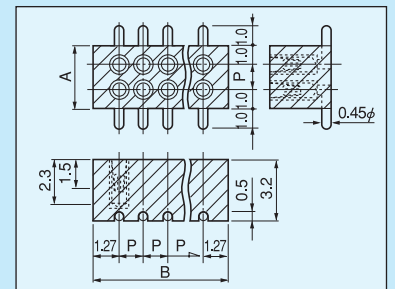
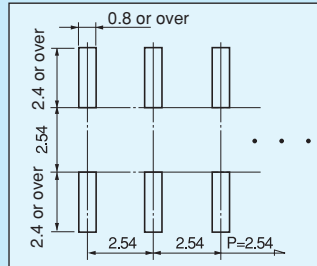
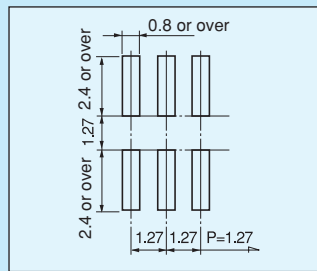


Vertical type connection socket for surface mounting [two-row type] [PCW series] (10pcs/pack)

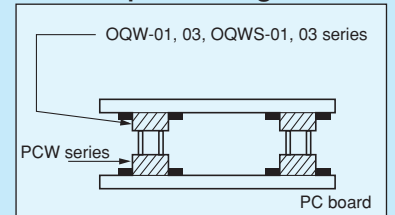
- This socket is a two-row type for surface mounting.
- This is available with a pitch of 1.27 mm and 2.54 mm.
- We will deliver by the desired number of poles.
- By combining with OQW-01 or OQWS-01 series, PC boards can be mounted by two-tiered installation.
- Material
 - Socket part Body: Brass
 - Contact part: Beryllium copper
 - Resin part: PCT black (UL94V-0)
- Finish
 - Socket part Body: Tin plating over nickel base
 - Contact part: Gold plating over nickel base
- Reflow can be used for this type.
- Specification
 - Rated current: 1A PCW-1-1
 - Rated voltage: 125V AC, DC
 - Withstand voltage: 1000V AC, DC per minute(PCW-3-1)
700V AC, DC per minute(PCW-1-1)
 - Insulation resistance: 500MΩ or over
 - Contact resistance: 10mΩ or less
 - Insertion / removal frequency: 100 times or over
 - Insertion forces: 30g or over (per pin)
 - Removal forces: 30g or over (per pin) PCW-3-1
 - Adaptive male pin diameter: φ 0.35 to φ 0.47
 - Operating temperature range: -40 to +125°C



Recommended land diameter



Example of usage



Part number	A	B	P	Maximum number of sockets connected
PCW-1-1	3.27	52.07	1.27	40P
PCW-3-1	4.54	50.8	2.54	20

How to order

PCW-1-1-10PW

↑ Please fill in the number of poles on one side.
(If the number is not specified, we will deliver by the maximum number of poles.)

Instructions for mounting

In the case that a warpage occurs on the resin part during reflow because many pins are connected for use, apply an adhesive to several positions.

Vertical type connection socket for surface mounting [two-row type] [with position] [PCWS series] (10pcs/pack)

- This is the type with the positioning sockets attached to PCW series described above.
(In the same manner as the face mounting socket, the positioning sockets can be electrically used.)
- The specification is same as PCW series.

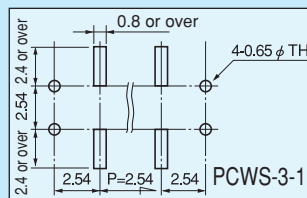
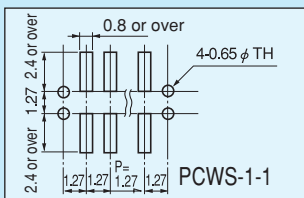
How to order

PCWS-1-1-10PW

↑ Please fill in the number of poles on one side.
(Please fill in the number of poles including the positioning sockets.)
(With 8P×2 as the face mounting socket and 2P×2 as the positioning socket.)

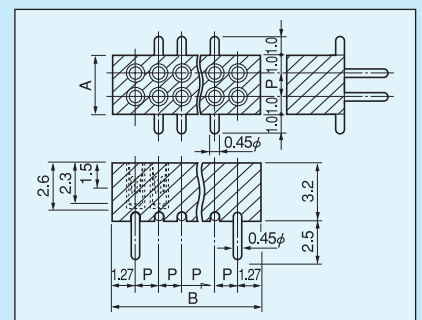
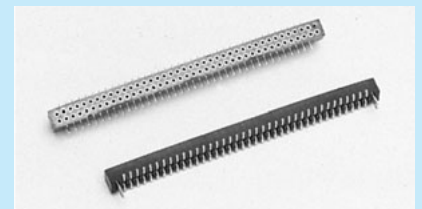
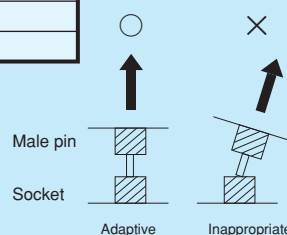
Part number	A	B	P	Maximum number of sockets connected
PCWS-1-1	3.27	52.07	1.27	40P
PCWS-3-1	4.54	50.8	2.54	20

Recommended land diameter



Instructions for use (PCW,PCWS)

When pulling the male pin, please pull it out vertically. Pulling by twisting or inclining may cause breakage of the socket.



Instructions for mounting

In the case that a warpage occurs on the resin part during reflow because many pins are connected for use, apply an adhesive to several positions.

For surface mounting