

**Parallel connection pin for surface mounting [HDA series] (10pcs/pack)**

- This allows parallel docking of the surface mounting boards. The socket side is the HDB series described below.
- The two types, with a pitch of 1.27 mm and 2.54 mm, are available.
- Material Pin part: Phosphor bronze  
Resin part: PCT black (UL94V-0)
- Finish: Gold plating over nickel base
- Rated current: 2A
- Withstand voltage: 700V AC, DC per minute(HDA-1-1)  
1000V AC, DC per minute(HDA-3-1)
- Insulation resistance:500MΩ or over
- Operating temperature range:−40 to +125°C

**Part number**

| Part number | P    | A     | Maximum number of pins connected |
|-------------|------|-------|----------------------------------|
| HDA-1-1     | 1.27 | 50.8  | 40                               |
| HDA-3-1     | 2.54 | 49.53 | 20                               |

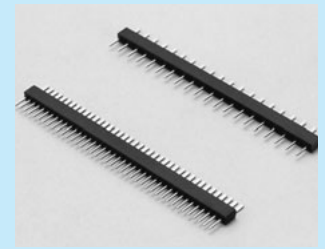
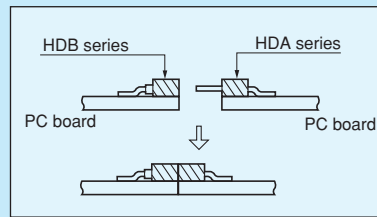
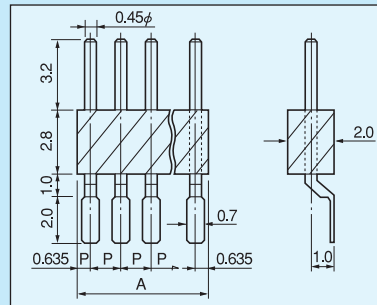
**How to order**

HDA-1-1-10P  
 Please fill in the desired number of poles.  
 \* If the number of poles is not specified, we will deliver the maximum connected number.

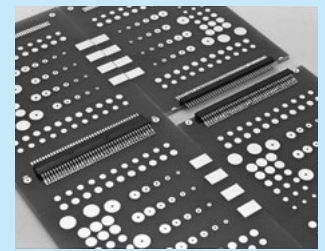
**Instructions for mounting**

In the case that a warpage occurs on the resin part during reflow because many pins are connected for use, apply an adhesive to several places.

\* HDA-1-1-2P: Taping specification is available. Please contact us.

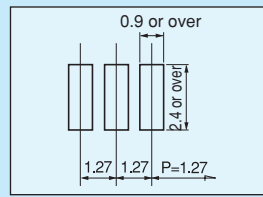


Example of usage

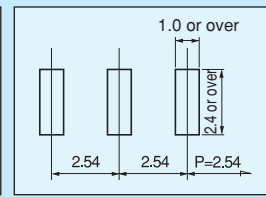


Combination of HDA-1-1 and HDB-1-1

**Recommended land diameter**



HDA-1-1



HDA-3-1

**Parallel connection socket for surface mounting [HDB series] (10pcs/pack)**

- By using a pair of this product and HDA series described above, PC boards can be docked in parallel.
- By combining with OQ series, the boards can be docked at right angle.
- The two types, with a pitch of 1.27 mm and 2.54 mm, are available.
- Material Body: Brass  
Contact: Beryllium copper  
Resin part: PCT black (UL94V-0)
- Finish: Gold plating over nickel base
- Rated current: 1A
- Withstand voltage: 500V AC, DC per minute(HDB-1-1)  
1000V AC, DC per minute (HDB-3-1)
- Insulation resistance:500MΩ or over
- Contact resistance:10mΩ or less
- Insertion / removal frequency: 100 times or over
- Insertion / removal forces: 30g or over (per pin)
- Adaptive male pin diameter: φ 0.4 to 0.5 φ
- Operating temperature range:−40 to +125°C

**Part number**

| Part number | P    | A     | Maximum number of pins connected |
|-------------|------|-------|----------------------------------|
| HDB-1-1     | 1.27 | 52.07 | 40                               |
| HDB-3-1     | 2.54 | 50.8  | 20                               |

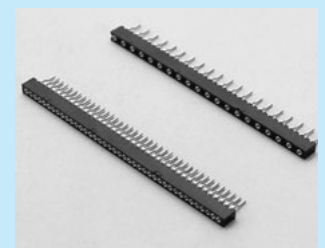
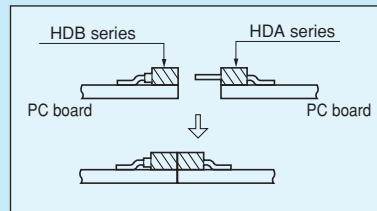
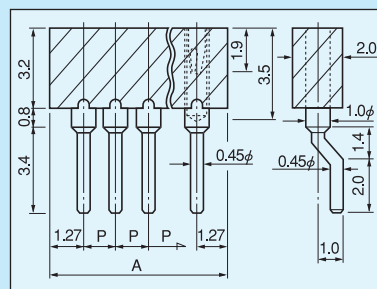
**How to order** HDB-1-1-10P

Please fill in the number of poles.

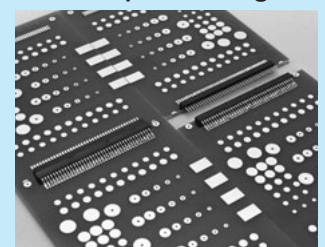
**Instructions for mounting**

In the case that a warpage occurs on the resin part during reflow due to many pins are connected for use, apply an adhesive to several places.

\* HDB-1-1-2P: Taping specification is available. Please contact us.

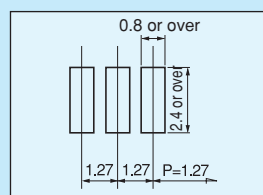


Example of usage

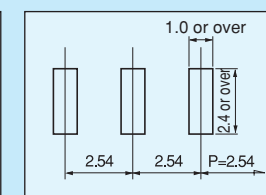


Combination with HDA-1-1 and HDB-1-1

**Recommended land diameter**



HDB-1-1



HDB-3-1

**Instructions for use**

When it is used in combination, the strength is poor. Please fix the PC boards to a chassis or fix the PC boards each other with AXH series.

\* If the number of poles is not specified, we will deliver the maximum connected number.