

If it is weak to heat, you can put it later!

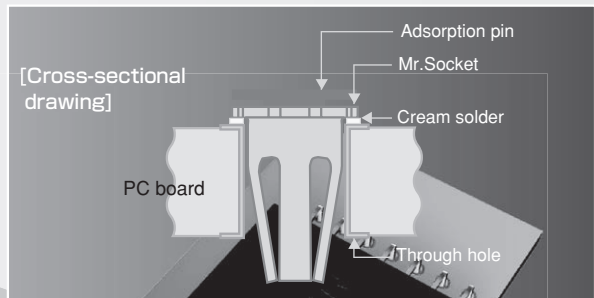
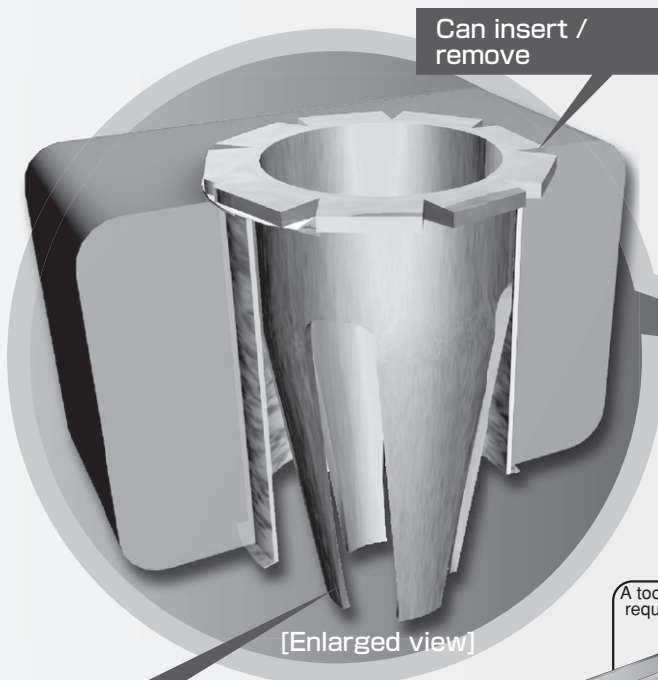
A through hole is changed to a socket!

**Mr.Socket**

**AF series**

[Can be used by a chip mounter]

Parts can be fit without soldering.



Can be used for a chip mounter

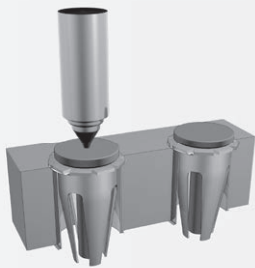
A tool in response to many requests is now available!

Tool for pulling out adsorption pin for AF series

Model: AF-JIG

A part which is weak to heat can be put on the PC board later!

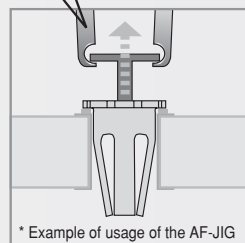
A through hole can be changed to a socket. It can be inserted / removed.



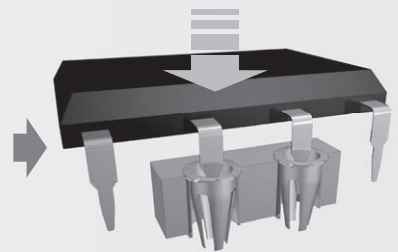
Automatic mounting by a chip mounter



Soldering by reflow



Remove the adsorption pin. (Push from the back side and remove vertically.)

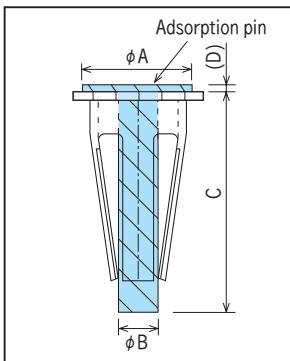
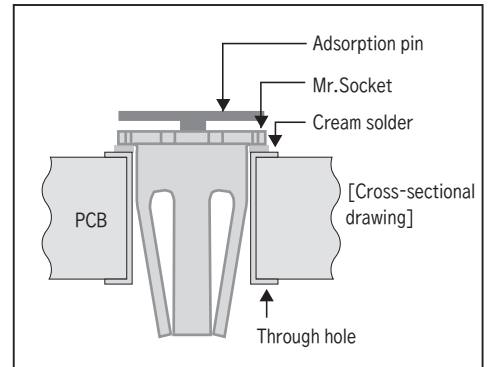


A through hole changes to a socket.

Mr.Socket

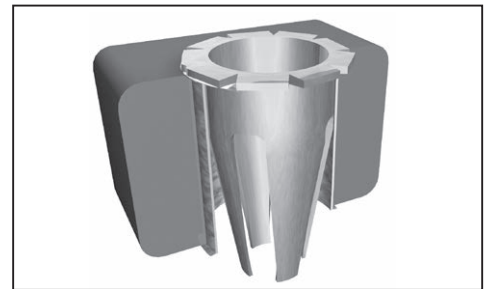
AF series

- By automatically mounting the AF series to a through hole with a mounter and carry out reflow, a through hole changes to a socket.
- Parts can be protected from the heat increase due to lead free soldering.
- Various parts (wire diameter:  $\phi$  0.40 to  $\phi$  1.0) can be mounted.
- Material: Beryllium copper (Adsorption pin: aluminum)
- Finish: Gold plating over nickel base
- Contact resistance: 10m  $\Omega$  or less
- Rated current:
  - AF-0.5 ( ) ... 2A
  - AF-0.7 ( ) ... 4A
  - AF-0.9 ( ) ... 6A
- Insertion / removal durability : 100 cycles
- Recommended metal mask thickness: 100  $\mu$ m to 150  $\mu$ m
- Adaptive thickness of PC board: Any thickness
- Operating temperature range: - 40 to + 125°C
- Please use the automatic recognition type of automatic mounter.



Adsorption pin state

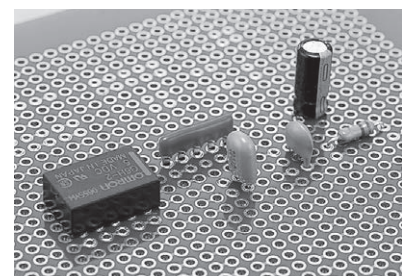
| Part No.   | A   | B    | C   | (D)  |
|------------|-----|------|-----|------|
| AF-0.5 ( ) | 1.3 | 0.45 | 2.9 | 0.18 |
| AF-0.7 ( ) | 1.6 | 0.6  | 3.4 | 0.15 |
| AF-0.9 ( ) | 2.0 | 0.8  | 4.0 | 0.25 |



■ Part No.

| Part No.   | Adaptive male pin diameter | Insertion forces (average value: g) | Removal forces (average value: g) | Package state |
|------------|----------------------------|-------------------------------------|-----------------------------------|---------------|
| AF-0.5 (L) | $\phi$ 0.45 to $\phi$ 0.6  | 50                                  | 30                                | 1000pcs/reel  |
| AF-0.5 (H) | $\phi$ 0.40 to $\phi$ 0.6  | 250                                 | 130                               | 1000pcs/reel  |
| AF-0.7 (L) | $\phi$ 0.6 to $\phi$ 0.8   | 90                                  | 50                                | 1000pcs/reel  |
| AF-0.7 (H) | $\phi$ 0.6 to $\phi$ 0.8   | 700                                 | 530                               | 1000pcs/reel  |
| AF-0.9 (L) | $\phi$ 0.8 to $\phi$ 1.0   | 100                                 | 70                                | 450pcs/reel   |
| AF-0.9 (H) | $\phi$ 0.8 to $\phi$ 1.0   | 280                                 | 200                               | 450pcs/reel   |

■ Example of usage



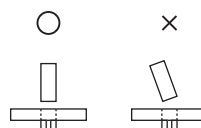
- (L): Type with weak insertion/removal forces
- (H): Type with strong insertion/removal forces
- The insertion/removal forces described above indicate the median value of the male pin.

● We also offer bulk package. (It does not include adsorption pins.)  
 Example of bulk package Part no: AF-0.5(L)-B (100 pieces are included in 1 pack.)

↑ Please put "B" .

■ Instructions for use

Insert a male pin vertically.  
 Do not twist it to the left and right after inserting.  
 (It weakens the insertion/removal forces.)



Jig for pulling out adsorption pins

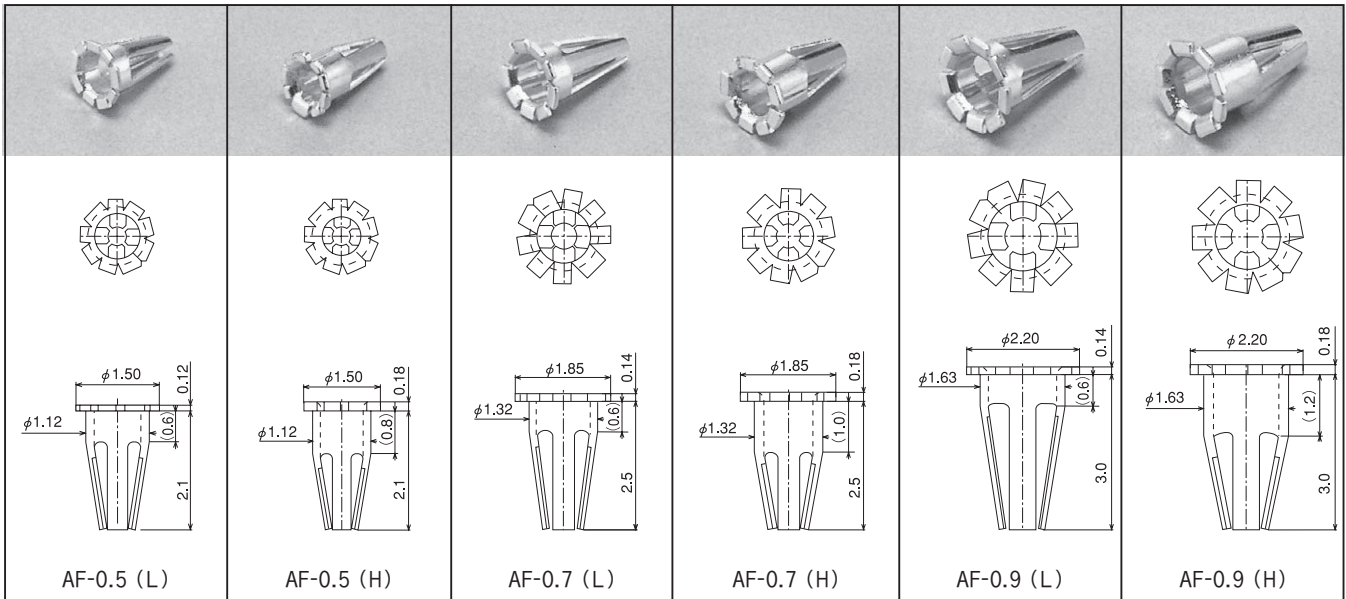
**AF-JIG** (1 unit is included in 1 pack.)

Tool

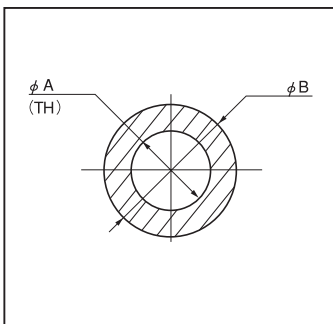


# Various parts can be mounted.

## Dimension



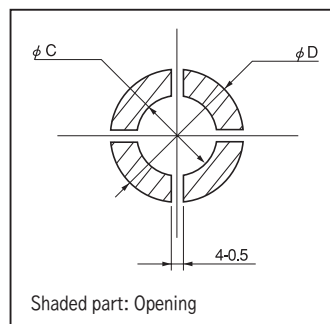
## Recommended land information



| Part No.   | $\phi A$<br>$^{+0.1}_0$ | $\phi B$ |
|------------|-------------------------|----------|
| AF-0.5 ( ) | 1.2                     | 2.0      |
| AF-0.7 ( ) | 1.4                     | 2.5      |
| AF-0.9 ( ) | 1.7                     | 3.0      |

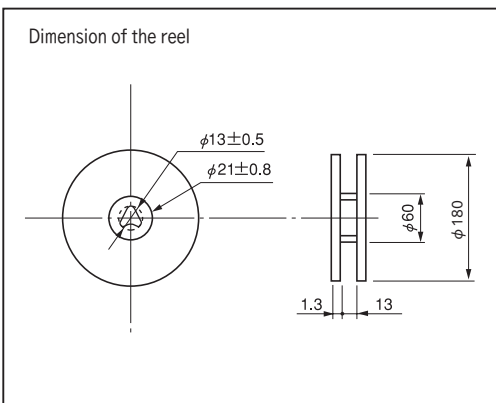
## Recommended metal mask

(Recommended metal mask thickness: 100  $\mu\text{m}$  to 150  $\mu\text{m}$ )

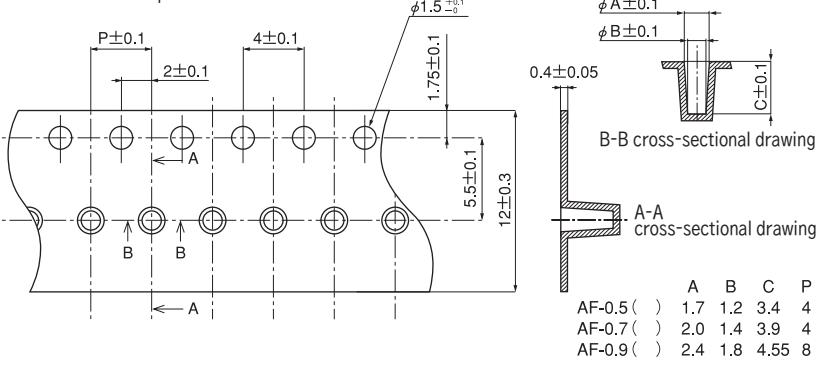


| Part No.   | Solder TH board |          | Copper TH Gold TH board |          |
|------------|-----------------|----------|-------------------------|----------|
|            | $\phi C$        | $\phi C$ | $\phi C$                | $\phi D$ |
| AF-0.5 ( ) | 1.5             | 1.3      | 2.0                     |          |
| AF-0.7 ( ) | 1.7             | 1.5      | 2.5                     |          |
| AF-0.9 ( ) | 2.0             | 1.8      | 3.0                     |          |

## Dimension of the reel



## Dimension of the tape



## Process

1. Apply cream solder on PC board with a metal mask (recommended metal mask thickness: 100 to 150  $\mu$ )
2. Mount AF Series by a mounter (Please use automatic recognition type mounter).
3. Reflow.
4. Push the adsorption pin from the back side.
5. Remove the protruded adsorption pin straight by AF-JIG. (Do not twist it to the left and right.)  
(Jig Part No.: AF-JIG) (1 unit is included in 1 pack.)