


## Color test point for automatic inserting machine for surface mounting [HK-5 series]

- A chip mounter can be used for this color check terminal.
- 10 colors same as the color cords, are available.
- Size: 2.5×3.0
- The strength will be increased by using the recommended land diameter with a simple shape (  ) and the size of 1.25×2.5 or over.
- This is stored in an embossed tape.
- Operating temperature range: -40 to +150°C
- Material

Pin part: Phosphor bronze 0.2t

Resin part (Shaded part): Fluorine (UL94V-0) color (10 colors)

- Finish HK-5-G:Gold plating over nickel base:HK-5-G

HK-5-S:Tin plating over nickel base

- How to order

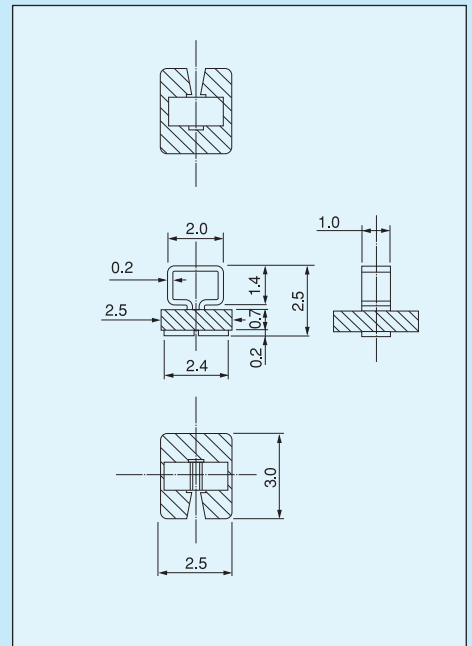
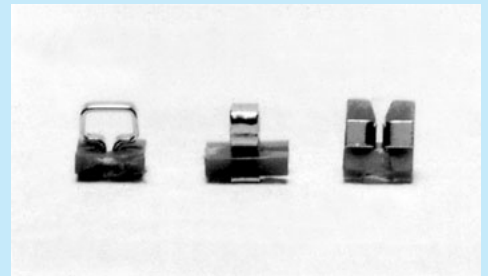
HK-5-G Red



Please specify the color.

Color (10 colors)

Black, brown, red, orange, yellow, green, blue, purple, gray or white

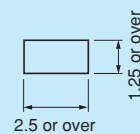


### Part number

Part number	Packing state
HK-5-G <span style="border: 1px solid black; padding: 0 2px;"> </span>	Reel (1000pcs/reel)
HK-5-S <span style="border: 1px solid black; padding: 0 2px;"> </span>	Reel (1000pcs/reel)
HK-5-G-B <span style="border: 1px solid black; padding: 0 2px;"> </span>	Bulk (1000pcs/pack)
HK-5-S-B <span style="border: 1px solid black; padding: 0 2px;"> </span>	Bulk (1000pcs/pack)

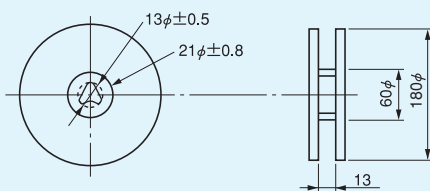
\* Please fill in the color in  

### Recommended land diameter



HK-5-G  } tape-and-reel  
 HK-5-S  }

### Dimension of the reel



### Dimension of the tape

