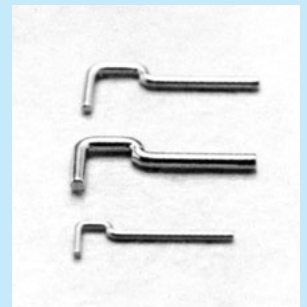
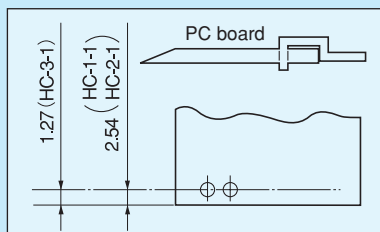


Terminal for hybrid IC [HC series] (1000pcs/pack)

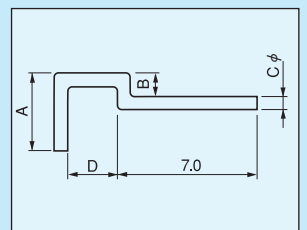
- This terminal can be taken out in the same direction as the PC board.
- Please use this for a leg of hybrid IC, etc.
- Material: Phosphor bronze
- Finish: Gold plating over nickel base



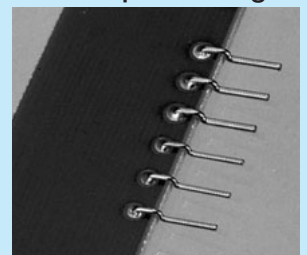
Part number	A	B	C	D	Printed board fitting hole diameter (ϕ)
HC-1-1	3.8	1.15	0.7	2.4	0.8
HC-2-1	4.0	1.25	0.9	2.4	1.0
HC-3-1	2.5	0.75	0.5	1.2	0.6



Example of fitting dimensions



Example of usage



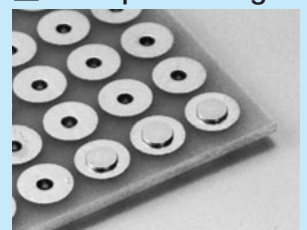
For hybrid IC

For contact point [CE series] (1000pcs/pack)

- Please use this as the electric contact point by fitting it to the PC board.
- Material: Brass
- Finish: Gold plating over nickel base
- Rated current:
 - CE-3-2: 10A
 - CE-3-3: 20A
 - CE-3-4: 30A



Example of usage



Part number	A	B
CE-3-2	2.0	1.0
CE-3-3	3.0	1.5
CE-3-4	4.0	2.0

