

## Terminal for flexible board [FR series] (10pcs/pack)

### ■ Connecting terminal

- This terminal can be fit and connected to conductive sheets, flexible boards and other sheets for which soldering is impossible.
- This terminal is used for taking out signals from sheets and for supplying power.
- Material Terminal main body: Brass  
Toothed lock washer: Phosphor bronze  
Flat washer: Brass  
Nut: Brass
- Finish: Terminal main body (gold plating over nickel base)  
Toothed lock washer, flat washer and nut (nickel plating)
- Fitting hole diameter FR-2 series:  $\phi$  2.0 to  $\phi$  2.1  
FR-2.6 series:  $\phi$  2.6 to  $\phi$  2.7
- Fitting board thickness: 0.1 mm to 0.4 mm
- Fitting torque  
FR-2 series: 1.5 kgf-cm (14.7N-cm) or less  
FR-2.6 series: 3.0 kgf-cm (29.4 N-cm) or less
- Rated current FR-2-1:4A  
FR-2.6-1 :7A
- Operating temperature range:  $-40$  to  $+125^{\circ}\text{C}$

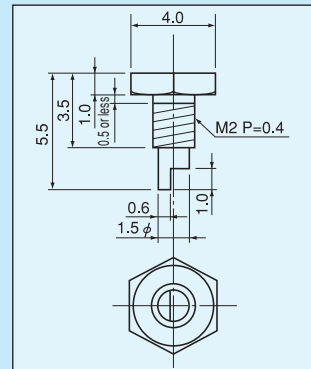
### ■ Male pin

- This male pin is used for the socket of flexible board (FR-2-3, FR-2.6-3).
- Material, finish, fitting hole diameter, tightening torque and operating temperature range are the same as those of the FR-2-1 and FR-2.6-1.
- Rated current  
FR-2-2:3A  
FR-2.6-2:7A

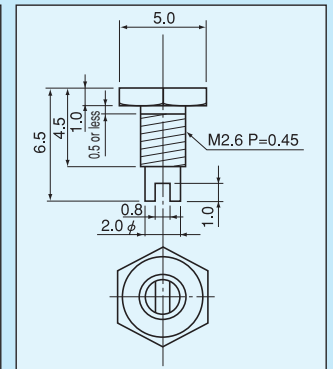
### ■ Socket

- The socket can be directly mounted to conductive sheets, flexible boards and other sheets for which soldering is impossible.
- Material, finish, fitting hole diameter, tightening torque and operating temperature range are the same as those of the FR-2-1 and FR-2.6-1.  
Contact part Material: Beryllium copper  
Finish: Gold plating over nickel base
- Adaptive male pin diameter FR-2-3:  $\phi$  0.45 to  $\phi$  0.6  
FR-2.6-3:  $\phi$  0.8 to  $\phi$  1.0
- Insertion / removal forces: FR-2-3:70g or over  
FR-2.6-3:150g or over
- Rated current:FR-2-3:1A  
FR-2.6-3: 5A
- Insertion / removal frequency: 100 times or over
- Contact resistance:10m $\Omega$  or less (Contact part)

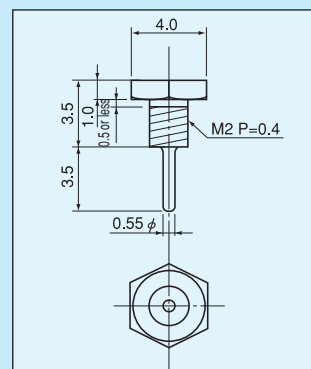
### ■ Example of usage



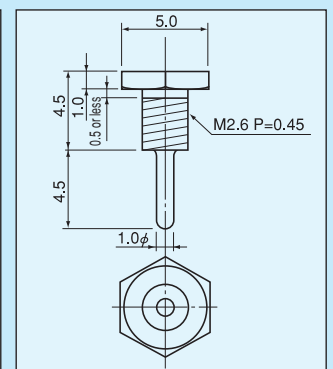
FR-2-1



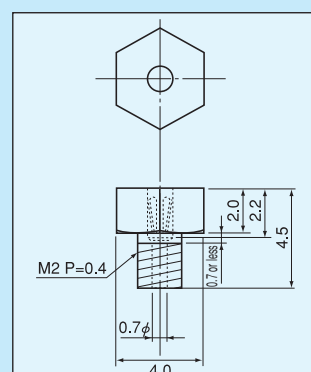
FR-2.6-1



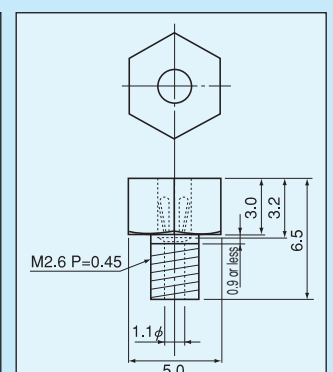
FR-2-2



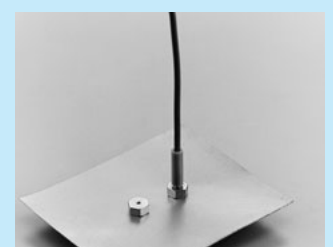
FR-2.6-2



FR-2-3



FR-2.6-3



\* Regarding the strength of the board when using and fitting FR series, please take into consideration of operation environment and mechanical properties of the board material.