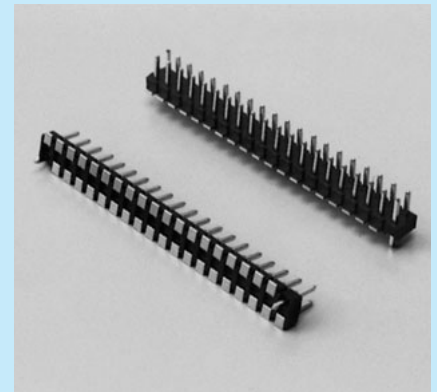


**Wrapping terminal for surface mounting (two-row connected type) [HWW-20PW series] (10pcs/pack)**

- This wrapping terminal can stand on a surface mounting board.
- Two rows are connected with a pitch of 2.54 mm. (Max.20PW connected)
- By inserting / pulling out the jumper socket [JS-1], this terminal can be used as a substitute for a switch. (The HWW type is applicable.)
- The pins on both sides are also used as the placement pins.
- Reflow can be used for this type.
- Material
  - SMT pin part: Brass
  - Placement pin part: Phosphor bronze
  - Resin part: PCT black (UL94V-0)

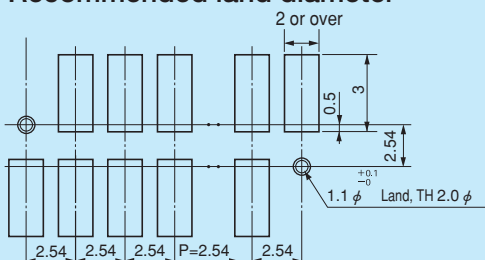


**Part number**

Part number	L	Finish
HWW-20PW-G	6.5	Gold plating over nickel base
HWW-20PW-S	6.5	Tin plating over nickel base
HWWH-20PW-G	8.2	Gold plating over nickel base
HWWH-20PW-S	8.2	Tin plating over nickel base

- Rated current: 3A
- Insulation resistance: 500MΩ or over
- Withstand voltage: 1000V AC, DC per minute
- Operating temperature range: -40 to +125°C

**Recommended land diameter**



- Placement pins can be used electrically.

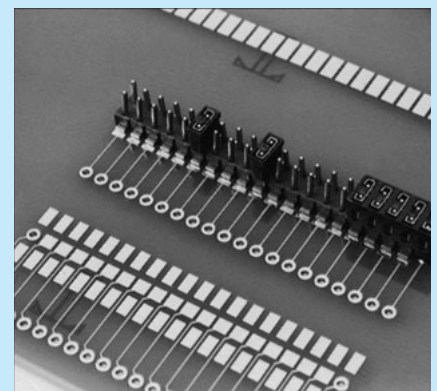
**How to order**

HWW-10PW-G

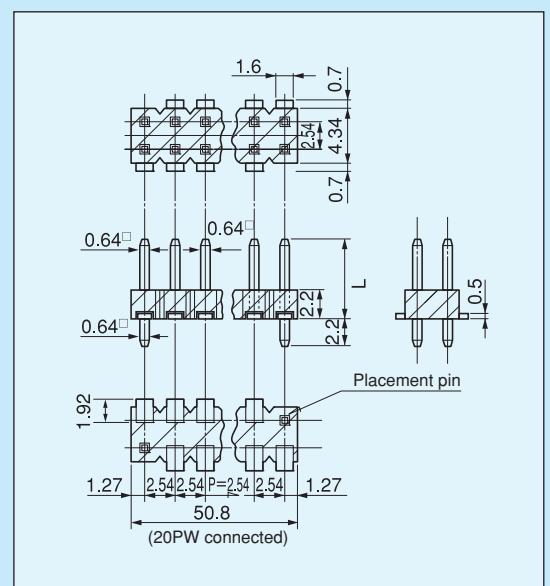
- G: Gold plating
- S: Tin plating
- Please fill in the number of poles on one side. (Please fill in the number of poles including the placement pin.) (In this case, the total number of pins is 20P.)
- \* Please use HWP-2P as HWW-1PW.
- Please use HWHP-2P as HWWH-1PW. (In this case, placement pins are not included.)
- \* If the number of poles is not specified, we will deliver by the maximum number of poles, 20PW.

\* We can manufacture this type without placement pins. Please contact us.

**Example of usage**



When JS-1 and JSW-1 are used



For surface mounting

**Instructions for mounting**

In the case that a warpage occurs on the resin part during reflow because many pins are connected for use, apply an adhesive to several places.