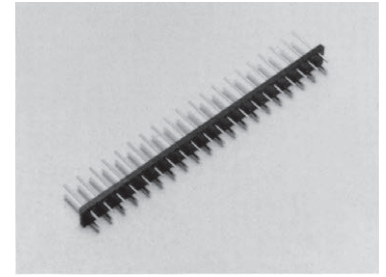


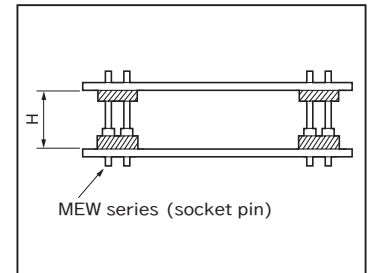
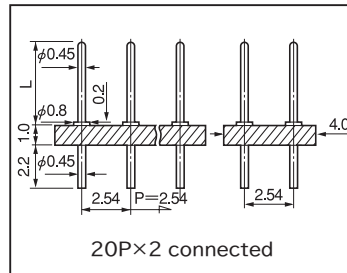
Super-small terminal for two-tiered installation (two-row type) (Pitch: 2.54mm)

MXW-3 series (10pcs/pack)

- This is used for mounting PC boards by two-tiered installation.
- This terminal is of two-row type with a pitch of 2.54mm.
- Material
 - Resin part: PCT resin black (UL94V-0),
 - Pin: Phosphor bronze, Finish: Gold plating over nickel base
- Rated current: 2A
- Insulation resistance: 500M Ω or over
- Withstand voltage: 1000V AC, DC per minute
- Operating temperature range: - 40 to + 125°C
- Printed board fitting hole diameter: φ 0.6
- Adaptive socket: MEW-3 series



Part No.	L	Number of pins connected	H	Adaptive socket pin
MXW-3-0	3.0	20 × 2	—	—
MXW-3-1	3.7	20 × 2	3.7	MEW-3-1
MXW-3-2	4.4	20 × 2	4.0	
MXW-3-3	4.9	20 × 2	4.5	
MXW-3-4	5.4	20 × 2	5.0	

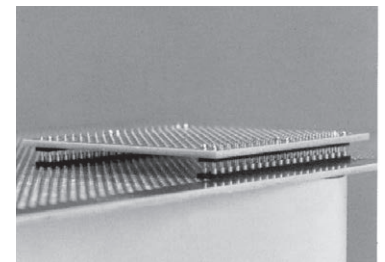


* The dimension H indicates the distance between the boards when combining MXW-3 series with MEW-3-1

How to order:

MXW-3-1-10PW

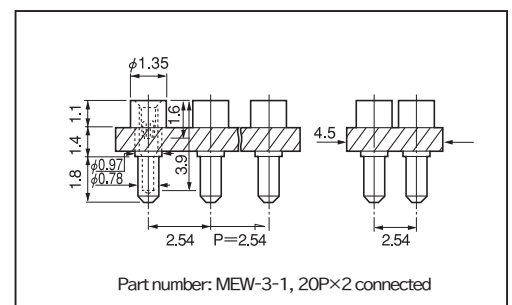
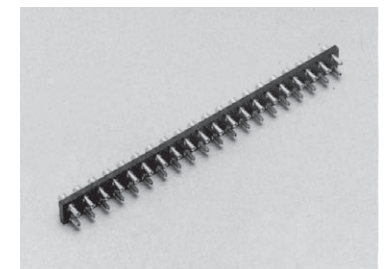
↑ Please fill in the number of poles on one side.
(Maximum number: 20PW)
(If the number is not specified, we will deliver the part of the maximum number of connection.)



Socket pin with super-low back (Pitch: 2.54mm)

Part No.: MEW-3-1 (10pcs/pack)

- By combining this with MXW-3 series, PC boards can be mounted by two-tiered installation.
- This terminal is of two-row type with a pitch of 2.54mm.
- Material
 - Resin part: PCT resin black (UL94V-0),
 - Pin part Body: Brass: Tin plating over nickel base
 - Contact part Beryllium copper: Gold plating over nickel base
- Operating temperature range: - 40 to + 125°C
- Rated current: 1A
- Insulation resistance: 500M Ω or over
- Withstand voltage: 1000V AC, DC per minute
- Insertion/removal durability : 100 cycles
- Contact resistance: 10m Ω or less
- Insertion/removal forces: 30g or over (per pin)
- Adaptive male pin diameter: φ 0.35 to φ 0.47
- Printed board fitting hole diameter: φ 0.9 to φ 1.0



Part No.: MEW-3-1

MEW-3-1-10PW

↑ Please fill in the number of poles on one side.
(Maximum number: 20PW)
(If the number is not specified, we will deliver the part of the maximum number of connection.)