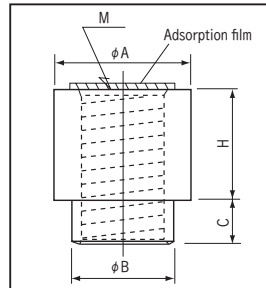


Through hole tap (M1.0, M1.2, M1.4, M1.6, M1.7, M2 type)

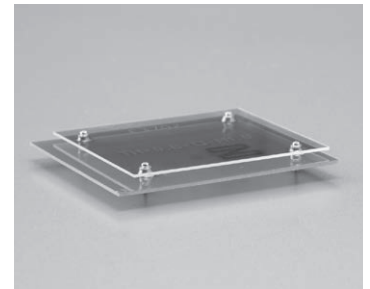
TH-0.6, TH-0.8 series

- A through hole changes to a threaded hole (M1.0, M1.2, M1.4, M1.6, M1.7 and M2).
- This tap can fit to various items.
- Taping type has an adsorption film. Please remove by pushing it from the opposite side after reflow.
- The jig for removing adsorption films (Part No.: TH-JIG) is available.
- Material: Brass
- Finish: Tin plating over nickel base
- Rated current:
 - TH-□-□-M1.0.....10A TH-□-□-M1.7.....15A
 - TH-□-□-M1.2.....12A TH-□-□-M2.....20A
 - TH-□-□-M1.4.....12A
 - TH-□-□-M1.6.....15A
- Tightening torque:
 - TH-□-□-M1.0.....0.3kgf-cm (2.94N-cm) or less
 - TH-□-□-M1.2.....0.6kgf-cm (5.88N-cm) or less
 - TH-□-□-M1.4.....1.0kgf-cm (9.8N-cm) or less
 - TH-□-□-M1.6.....1.5kgf-cm (14.7N-cm) or less
 - TH-□-□-M1.7.....1.5kgf-cm (14.7N-cm) or less
 - TH-□-□-M2.....1.5kgf-cm (14.7N-cm) or less
- Adaptive printed board thickness: t0.6 or over (TH-0.6 series), 0.8t or over (TH-0.8 series)
(There is no problem if it is used for other board thickness.)
- Recommended metal mask thickness: 150 μm to 200 μm

Dimension



Example of usage



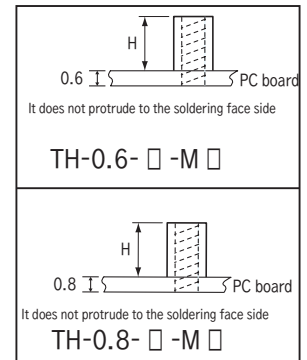
Condition of fitting the panel to the printed board

Part No.

Part No.	A	B	C	H	M	quantity per reel
TH-0.6-0.5-M1.0	2.5	1.6	0.45	0.5	M1.0	1000 pcs
TH-0.6-1.0-M1.0	2.5	1.6	0.45	1.0	M1.0	1000 pcs
TH-0.6-1.5-M1.0	2.5	1.6	0.45	1.5	M1.0	600 pcs
TH-0.6-2.0-M1.0	2.5	1.6	0.45	2.0	M1.0	600 pcs
TH-0.6-2.5-M1.0	2.5	1.6	0.45	2.5	M1.0	500 pcs
TH-0.6-3.0-M1.0	2.5	1.6	0.45	3.0	M1.0	500 pcs
TH-0.6-0.5-M1.2	2.5	1.8	0.45	0.5	M1.2	1000 pcs
TH-0.6-1.0-M1.2	2.5	1.8	0.45	1.0	M1.2	1000 pcs
TH-0.6-1.5-M1.2	2.5	1.8	0.45	1.5	M1.2	600 pcs
TH-0.6-2.0-M1.2	2.5	1.8	0.45	2.0	M1.2	600 pcs
TH-0.6-2.5-M1.2	2.5	1.8	0.45	2.5	M1.2	500 pcs
TH-0.6-3.0-M1.2	2.5	1.8	0.45	3.0	M1.2	500 pcs
TH-0.6-0.7-M1.4	2.7	2.0	0.45	0.7	M1.4	1000 pcs
TH-0.6-1.0-M1.4	2.7	2.0	0.45	1.0	M1.4	1000 pcs
TH-0.6-1.5-M1.4	2.7	2.0	0.45	1.5	M1.4	700 pcs
TH-0.6-2.0-M1.4	2.7	2.0	0.45	2.0	M1.4	700 pcs
TH-0.6-2.5-M1.4	2.7	2.0	0.45	2.5	M1.4	500 pcs
TH-0.6-3.0-M1.4	2.7	2.0	0.45	3.0	M1.4	500 pcs
TH-0.6-0.8-M1.6	3.0	2.2	0.45	0.8	M1.6	900 pcs
TH-0.6-1.0-M1.6	3.0	2.2	0.45	1.0	M1.6	900 pcs
TH-0.6-1.5-M1.6	3.0	2.2	0.45	1.5	M1.6	900 pcs
TH-0.6-2.0-M1.6	3.0	2.2	0.45	2.0	M1.6	600 pcs
TH-0.6-2.5-M1.6	3.0	2.2	0.45	2.5	M1.6	500 pcs
TH-0.6-3.0-M1.6	3.0	2.2	0.45	3.0	M1.6	500 pcs
TH-0.6-0.8-M1.7	3.0	2.3	0.45	0.8	M1.7	900 pcs
TH-0.6-1.0-M1.7	3.0	2.3	0.45	1.0	M1.7	900 pcs
TH-0.6-1.5-M1.7	3.0	2.3	0.45	1.5	M1.7	900 pcs
TH-0.6-2.0-M1.7	3.0	2.3	0.45	2.0	M1.7	600 pcs
TH-0.6-2.5-M1.7	3.0	2.3	0.45	2.5	M1.7	500 pcs
TH-0.6-3.0-M1.7	3.0	2.3	0.45	3.0	M1.7	500 pcs
TH-0.6-1.1-M2	4.0	2.5	0.45	1.1	M2	600 pcs
TH-0.6-1.5-M2	4.0	2.5	0.45	1.5	M2	600 pcs
TH-0.6-2.0-M2	4.0	2.5	0.45	2.0	M2	600 pcs
TH-0.6-2.5-M2	4.0	2.5	0.45	2.5	M2	450 pcs
TH-0.6-3.0-M2	4.0	2.5	0.45	3.0	M2	450 pcs
TH-0.6-3.5-M2	4.0	2.5	0.45	3.5	M2	450 pcs
TH-0.6-4.0-M2	4.0	2.5	0.45	4.0	M2	350 pcs
TH-0.6-4.5-M2	4.0	2.5	0.45	4.5	M2	350 pcs
TH-0.6-5.0-M2	4.0	2.5	0.45	5.0	M2	350 pcs

Part No.	A	B	C	H	M	quantity per reel
TH-0.8-1.0-M1.0	2.5	1.6	0.7	1.0	M1.0	600 pcs
TH-0.8-1.5-M1.0	2.5	1.6	0.7	1.5	M1.0	600 pcs
TH-0.8-2.0-M1.0	2.5	1.6	0.7	2.0	M1.0	600 pcs
TH-0.8-2.5-M1.0	2.5	1.6	0.7	2.5	M1.0	500 pcs
TH-0.8-3.0-M1.0	2.5	1.6	0.7	3.0	M1.0	500 pcs
TH-0.8-3.5-M1.0	2.5	1.6	0.7	3.5	M1.0	300 pcs
TH-0.8-4.0-M1.0	2.5	1.6	0.7	4.0	M1.0	300 pcs
TH-0.8-4.5-M1.0	2.5	1.6	0.7	4.5	M1.0	300 pcs
TH-0.8-5.0-M1.0	2.5	1.6	0.7	5.0	M1.0	300 pcs
TH-0.8-1.0-M1.2	2.5	1.8	0.7	1.0	M1.2	600 pcs
TH-0.8-1.5-M1.2	2.5	1.8	0.7	1.5	M1.2	600 pcs
TH-0.8-2.0-M1.2	2.5	1.8	0.7	2.0	M1.2	600 pcs
TH-0.8-2.5-M1.2	2.5	1.8	0.7	2.5	M1.2	500 pcs
TH-0.8-3.0-M1.2	2.5	1.8	0.7	3.0	M1.2	500 pcs
TH-0.8-1.0-M1.4	2.7	2.0	0.7	1.0	M1.4	700 pcs
TH-0.8-1.5-M1.4	2.7	2.0	0.7	1.5	M1.4	700 pcs
TH-0.8-2.0-M1.4	2.7	2.0	0.7	2.0	M1.4	500 pcs
TH-0.8-2.5-M1.4	2.7	2.0	0.7	2.5	M1.4	500 pcs
TH-0.8-3.0-M1.4	2.7	2.0	0.7	3.0	M1.4	400 pcs
TH-0.8-0.6-M1.6	3.0	2.2	0.7	0.6	M1.6	900 pcs
TH-0.8-1.0-M1.6	3.0	2.2	0.7	1.0	M1.6	900 pcs
TH-0.8-1.5-M1.6	3.0	2.2	0.7	1.5	M1.6	600 pcs
TH-0.8-2.0-M1.6	3.0	2.2	0.7	2.0	M1.6	600 pcs
TH-0.8-2.5-M1.6	3.0	2.2	0.7	2.5	M1.6	500 pcs
TH-0.8-3.0-M1.6	3.0	2.2	0.7	3.0	M1.6	500 pcs
TH-0.8-0.6-M1.7	3.0	2.3	0.7	0.6	M1.7	900 pcs
TH-0.8-1.0-M1.7	3.0	2.3	0.7	1.0	M1.7	900 pcs
TH-0.8-1.5-M1.7	3.0	2.3	0.7	1.5	M1.7	600 pcs
TH-0.8-2.0-M1.7	3.0	2.3	0.7	2.0	M1.7	600 pcs
TH-0.8-2.5-M1.7	3.0	2.3	0.7	2.5	M1.7	500 pcs
TH-0.8-3.0-M1.7	3.0	2.3	0.7	3.0	M1.7	500 pcs
TH-0.8-1.0-M2	4.0	2.5	0.7	1.0	M2	450 pcs
TH-0.8-1.5-M2	4.0	2.5	0.7	1.5	M2	450 pcs
TH-0.8-2.0-M2	4.0	2.5	0.7	2.0	M2	450 pcs
TH-0.8-2.5-M2	4.0	2.5	0.7	2.5	M2	350 pcs
TH-0.8-3.0-M2	4.0	2.5	0.7	3.0	M2	350 pcs
TH-0.8-3.5-M2	4.0	2.5	0.7	3.5	M2	350 pcs
TH-0.8-4.0-M2	4.0	2.5	0.7	4.0	M2	250 pcs
TH-0.8-4.5-M2	4.0	2.5	0.7	4.5	M2	250 pcs
TH-0.8-5.0-M2	4.0	2.5	0.7	5.0	M2	250 pcs

Condition of fitting to the PC board



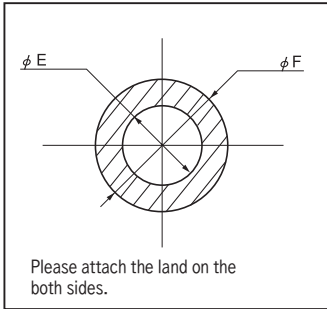
- M1.0 P=0.25
- M1.2 P=0.25
- M1.4 P=0.3
- M1.6 P=0.35
- M1.7 P=0.35
- M2 P=0.4

▲ Use of a through hole tap is limited to a through hole board.
(It is impossible to use it for a one-sided board and non through hole board.)

Through hole tap (M1.0, M1.2, M1.4, M1.6, M1.7, M2 type)

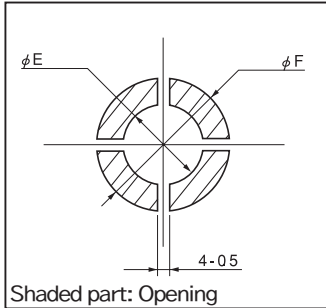
TH-0.6, TH-0.8 specification

■ Recommended land information



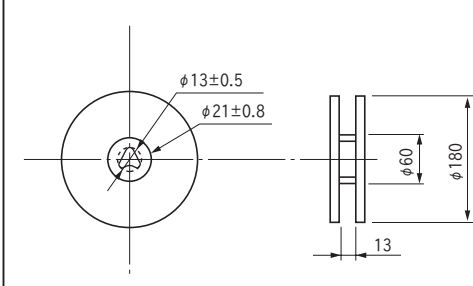
■ Recommended metal mask

(Recommended metal mask thickness: 150 μm to 200 μm)

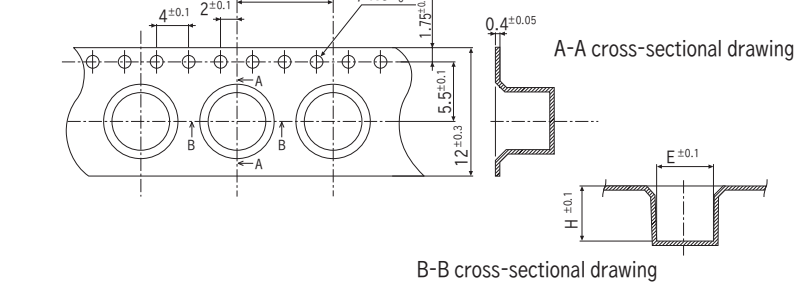


Part No.	E	F
TH-□-□-M1.0	1.8	3.5
TH-□-□-M1.2	2.0	3.5
TH-□-□-M1.4	2.2	4.0
TH-□-□-M1.6	2.4	4.0
TH-□-□-M1.7	2.5	4.0
TH-□-□-M2	2.7	5.0

Dimension of the reel



Dimension of the reel



■ Table of dimensions

Part No.	E	H
TH-0.6-0.5-M1.0	2.7	1.6
TH-0.6-1.0-M1.0	2.7	1.6
TH-0.6-1.5-M1.0	2.8	3.0
TH-0.6-2.0-M1.0	2.8	3.0
TH-0.6-2.5-M1.0	2.8	4.0
TH-0.6-3.0-M1.0	2.8	4.0
TH-0.6-0.5-M1.2	2.7	1.6
TH-0.6-1.0-M1.2	2.7	1.6
TH-0.6-1.5-M1.2	2.8	3.0
TH-0.6-2.0-M1.2	2.8	3.0
TH-0.6-2.5-M1.2	2.8	4.0
TH-0.6-3.0-M1.2	2.8	4.0
TH-0.6-0.7-M1.4	2.9	1.8
TH-0.6-1.0-M1.4	2.9	1.8
TH-0.6-1.5-M1.4	3.0	2.75
TH-0.6-2.0-M1.4	3.0	2.75
TH-0.6-2.5-M1.4	3.0	3.8
TH-0.6-3.0-M1.4	3.0	3.8
TH-0.6-0.8-M1.6	3.2	2.2
TH-0.6-1.0-M1.6	3.2	2.2
TH-0.6-1.5-M1.6	3.2	2.2
TH-0.6-2.0-M1.6	3.3	3.0
TH-0.6-2.5-M1.6	3.3	4.0
TH-0.6-3.0-M1.6	3.3	4.0
TH-0.6-0.8-M1.7	3.2	2.2
TH-0.6-1.0-M1.7	3.2	2.2
TH-0.6-2.0-M1.7	3.3	3.0
TH-0.6-2.5-M1.7	3.3	4.0
TH-0.6-3.0-M1.7	3.3	4.0
TH-0.6-1.1-M2	4.3	2.75
TH-0.6-1.5-M2	4.3	2.75
TH-0.6-2.0-M2	4.3	2.75
TH-0.6-2.5-M2	4.3	4.25
TH-0.6-3.0-M2	4.3	4.25
TH-0.6-3.5-M2	4.3	4.25
TH-0.6-4.0-M2	4.3	5.75
TH-0.6-4.5-M2	4.3	5.75
TH-0.6-5.0-M2	4.3	5.75

Part No.	E	H
TH-0.8-1.0-M1.0	2.8	3.0
TH-0.8-1.5-M1.0	2.8	3.0
TH-0.8-2.0-M1.0	2.8	3.0
TH-0.8-2.5-M1.0	2.8	4.0
TH-0.8-3.0-M1.0	2.8	4.0
TH-0.8-3.5-M1.0	2.8	5.0
TH-0.8-4.0-M1.0	2.8	5.0
TH-0.8-4.5-M1.0	2.8	6.0
TH-0.8-5.0-M1.0	2.8	6.0
TH-0.8-1.0-M1.2	2.8	3.0
TH-0.8-1.5-M1.2	2.8	3.0
TH-0.8-2.0-M1.2	2.8	3.0
TH-0.8-2.5-M1.2	2.8	4.0
TH-0.8-3.0-M1.2	2.8	4.0
TH-0.8-1.0-M1.4	3.0	2.75
TH-0.8-1.5-M1.4	3.0	2.75
TH-0.8-2.0-M1.4	3.0	3.8
TH-0.8-2.5-M1.4	3.0	3.8
TH-0.8-3.0-M1.4	3.0	4.8
TH-0.8-0.6-M1.6	3.2	2.2
TH-0.8-1.0-M1.6	3.2	2.2
TH-0.8-1.5-M1.6	3.3	3.0
TH-0.8-2.0-M1.6	3.3	3.0
TH-0.8-2.5-M1.6	3.3	4.0
TH-0.8-3.0-M1.6	3.3	4.0
TH-0.8-0.6-M1.7	3.2	2.2
TH-0.8-1.0-M1.7	3.2	2.2
TH-0.8-1.5-M1.7	3.3	3.0
TH-0.8-2.0-M1.7	3.3	3.0
TH-0.8-2.5-M1.7	3.3	4.0
TH-0.8-3.0-M1.7	3.3	4.0

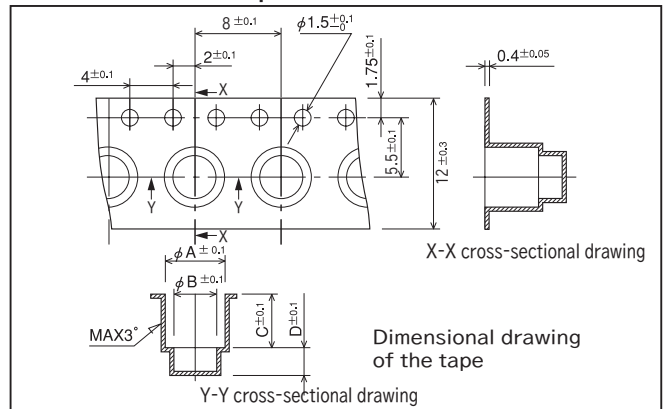
■ To order bulk product

TH-0.6-□-□-B

↑ Please specify -B.

- 100 piece are included in 1 pack.

■ TH-0.8-□-M2 tape



Part No.	A	B	C	D
TH-0.8-1.0-M2	4.3	2.8	1.3	1.7
TH-0.8-1.5-M2	4.3	2.8	2.3	1.7
TH-0.8-2.0-M2	4.3	2.8	2.3	1.7
TH-0.8-2.5-M2	4.3	2.8	3.8	1.7
TH-0.8-3.0-M2	4.3	2.8	3.8	1.7
TH-0.8-3.5-M2	4.3	2.8	3.8	1.7
TH-0.8-4.0-M2	4.3	2.8	5.3	1.7
TH-0.8-4.5-M2	4.3	2.8	5.3	1.7
TH-0.8-5.0-M2	4.3	2.8	5.3	1.7