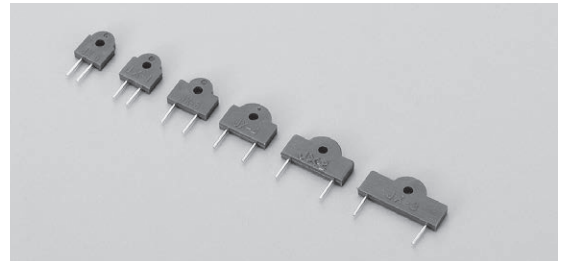


Jumper pin

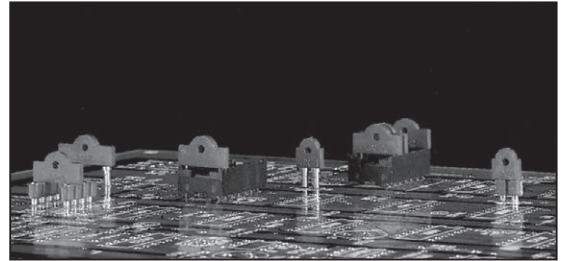
JX series (100pcs/pack)

- By combining with PD or PM series, the IC socket, switching function is available.
- Outside material: PBT resin red (UL-94V-0)
- Pin: Phosphorous bronze ϕ 0.5, Gold plating over nickel base
- Operating temperature range: - 40 to + 125°C

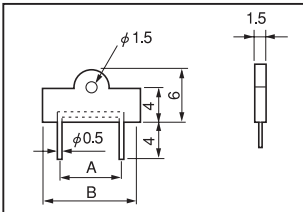
Part No.	A	B	Adaptive socket pin
JX-1	2.54	5.54	PD-1、PD-10
JX-2	7.62	10.62	PD-4、PD-40
JX-3	10.16	13.16	PD-7、PD-70
JX-4	5.08	8.08	PM-1、PM-10
JX-5	2.0	5.0	PM-8、PM-80
JX-6	4.0	7.0	PX-1 PC-10
JX-11	See below		etc.



■ Example of usage

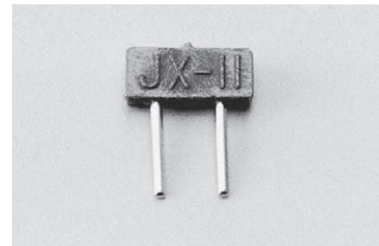
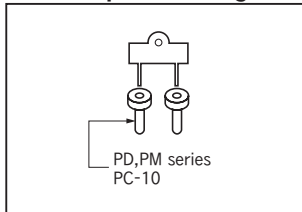


■ Dimension

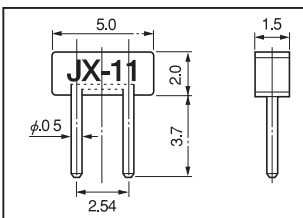


JX-1, JX-2, JX-3, JX-4, JX-5, JX-6

■ Example of usage



JX-11



JX-11

Super-small jumper pin

Part No.: JX-10 (100pcs/pack)

- By combining with PC-10 or PX-1, turning ON/OFF is available at the height of 2.5 mm on the board.
- This is the best solution for switching function on a small high-density mounting board.
- Material Resin :PBT resin red (UL-94V-0)
- Pin: Phosphor bronze ϕ 0.45, Gold plating over nickel base
- Operating temperature range: - 40 to + 125°C

Part No.	Adaptive socket pin
JX-10	PD-7,PD-70,PC-10 PX-1,PC-11etc.

