

Check terminal for panel [Part number: PN-6-1] (10pcs/pack)

- This is fitting to the panel and used for checking a signal line.
- This can hook an oscilloscope probe.
- As the terminal is recessed to the deep part and it does not contact to hand, it can be used safely.
- Six colors are available.
- Material
 - Resin part: Acetal copolymer (UL94HB)
 - Metal part: Brass
 - Nut: Brass
- Finish Metal part: Gold plating over nickel base
 - Nut: Nickel plating
- Insulation resistance: 500M Ω or over
- Withstand voltage: 1000V AC, DC per minute
- Operating temperature range: -40 to $+85^{\circ}\text{C}$
- Thickness of panel that can be fit: 1.0 mm to 3.0 mm
- Panel fitting hole diameter: ϕ 4.2
- Resin color: Black, red, yellow, green, blue and white

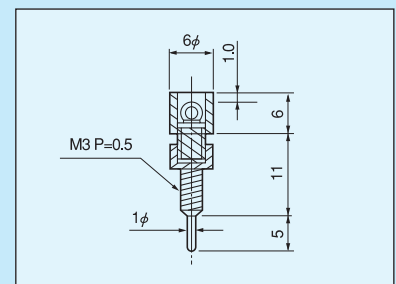
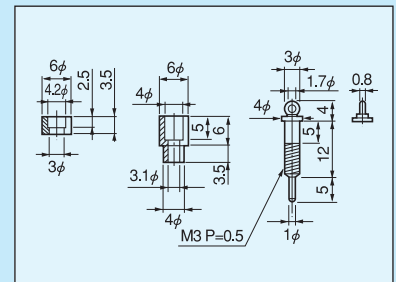
How to order

PN-6-1 Red

↑
Please specify the resin color.
(Black, red, yellow, green, blue or white)

Instructions for use

- Please use with the tightening torque of 3kg.f.cm (29.4 N.cm) or less when fitting.



Example of usage

