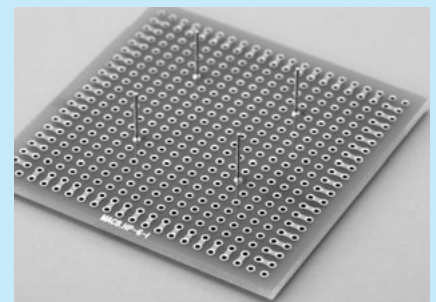


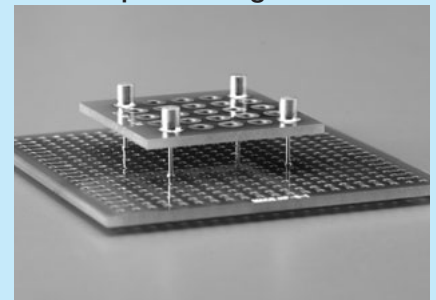
Socket for two-tiered installation for surface mounting [PDR-0.7]

- This socket is used for two-tiered installation of boards.
- This socket allows two-tiered installation with the part surface of the slave board (mounting surface) facing upper side.
- This product is automatically mounted at the same time with the parts such as chip LED.
- Man-hours for turning over the boards after mounting, reflowing again, removing pins or films for adsorption will be reduced.
- As the parts are not going through to the back face (when the board thickness is 1.6 or over), handling of the slave board after mounting is easy.
- Material
 - Body: Brass
 - Contact part: Beryllium copper
- Finish
 - Body: Tin plating over nickel base
 - Contact: Gold plating over nickel base
- Specification
 - Rated current: 5A
 - Contact resistance: 10mΩ or less
 - Insertion forces: 150g or over
 - Removal forces: 150g or over
 - Adaptive male pin diameter: $\phi 0.6$ to $\phi 0.8$
 - Operating temperature range: -40 to +125°C

Please use the automatic mouter of automatic recognition type.



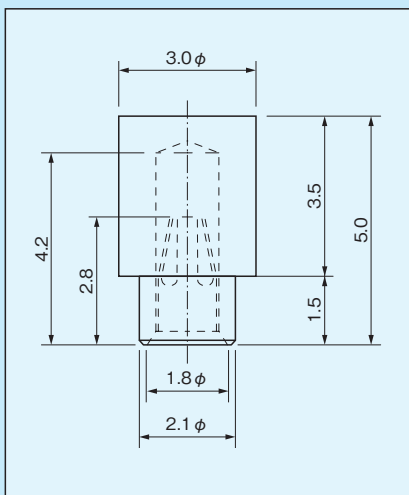
Example of usage



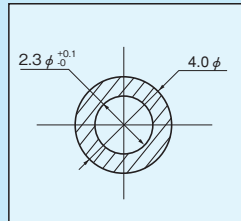
Part number

Part number	Package
PDR-0.7	Reel (350pcs/reel)
PDR-0.7-B	Bulk (100pcs/pack)

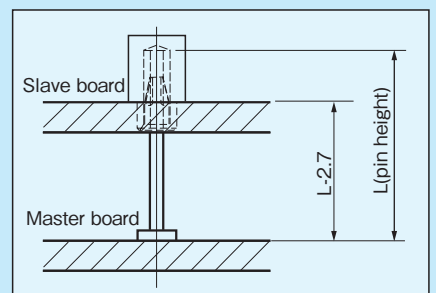
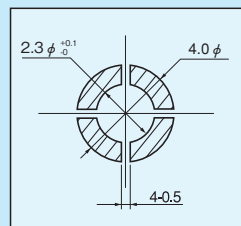
Dimension



Recommended land diameter

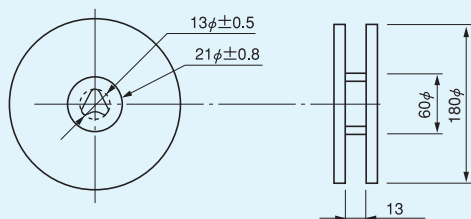


Recommended metal mask



For surface mounting

Dimension of the reel



Dimension of the tape

