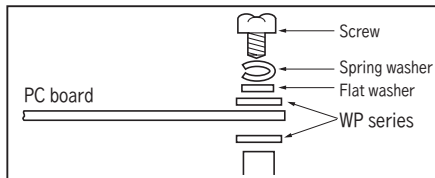
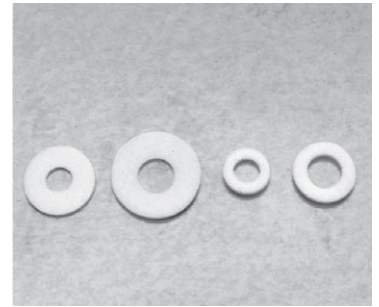
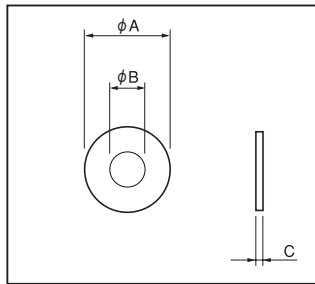


**Flat washer for insulation (fluorine)**

**WP series (100pcs/pack)**

- When the pattern is close to the screw hole of a PC board, the insulation washer is used for preventing a short.
- Material: Fluorine (UL94V-0)
- Color: WHITE
- Operating temperature range: - 55 to + 240°C

Part No.	A	B	C	Screw to use
WP-1	9	3.2	0.5	For M3
WP-2	11	4.5	0.5	For M4
WP-3	6	3.2	1.0	For M3
WP-4	8	4.2	1.0	For M4
WP-5	9	3.2	1.0	For M3
WP-6	11	4.5	1.0	For M4
WP-7	4	2.1	0.5	For M2
WP-8	5	2.7	0.5	For M2.6
WP-9	5	2.7	1.0	For M2.6

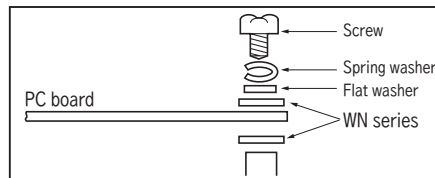
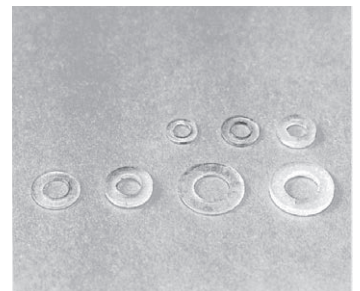
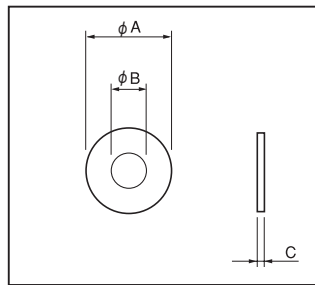


**Flat washer for insulation (nylon)**

**WN series (100pcs/pack)**

- When the pattern is close to the screw hole of a PC board, the insulation washer is used for preventing a short.
- Material: 6 nylon (UL94HB)
- Operating temperature range: - 40 to + 100°C

Part No.	A	B	C	Screw to use
WN-1	4	2.1	0.5	For M2
WN-2	5	2.7	0.5	For M2.6
WN-3	5	2.7	1.0	For M2.6
WN-4	6	3.1	0.5	For M3
WN-5	6	3.1	1.0	For M3
WN-6	8	4.2	0.5	For M4
WN-7	8	4.2	1.0	For M4



**Flat washer for insulation (glass epoxy)**

**WG series (100pcs/pack)**

- When the pattern is close to the screw hole of a PC board, the insulation washer is used for preventing a short.
- Material: Glass epoxy (UL94V-0)
- Operating temperature range: - 40 to + 125°C

Part No.	A	B	Screw to use
WG-1	4.5	2.0	For M2
WG-2	5.5	2.6	For M2.6
WG-3	6.0	3.0	For M3
WG-4	8.0	4.0	For M4

