

Socket type (ϕ 0.8 to ϕ 1.0) [Part number: PN-5-1] (10pcs/pack)

- This is a socket type and OP-6-1 and HJ-31 are adaptive for the male side.
- Material Pin part: Brass
 - Contact part: Beryllium copper
 - Resin part: Acetal copolymer (UL94HB)
 - Nut part: Brass, Nickel plating
- Finish Pin part: Gold plating over nickel base
 - Contact part: Gold plating over nickel base
- Resin color: Black, red, yellow, green, blue and white
- Adaptive male pin diameter: ϕ 0.8 to ϕ 1.0
- Insertion / removal forces: 150g or over
- Rated current: 5A
- Insulation resistance: 500M Ω or over
- Withstand voltage: 1000V AC, DC per minute
- Operating temperature range: -40 to $+85^{\circ}\text{C}$
- Thickness of panel that can be fit: 1.0 mm to 3.0 mm
- Panel fitting hole diameter: ϕ 4.2

How to order

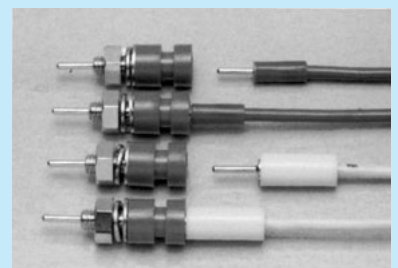
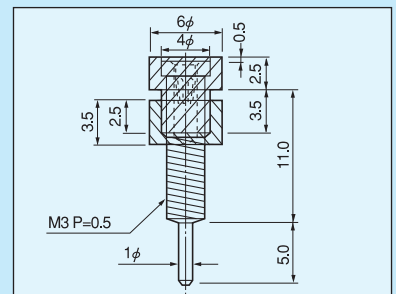
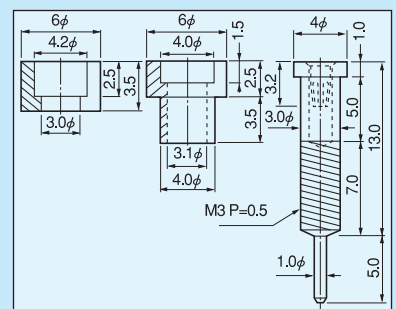
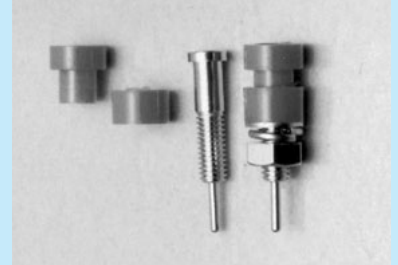
PN-5-1 Red



Please specify the resin color.
(Black, red, yellow, green, blue or white)

Instructions for use

- Please use with the tightening torque of 3kg.f.cm (29.4 N.cm) or less when fitting.



Combination of PN-5-1- and OP-6-1
Combination of PN-5-1- and HJ-31