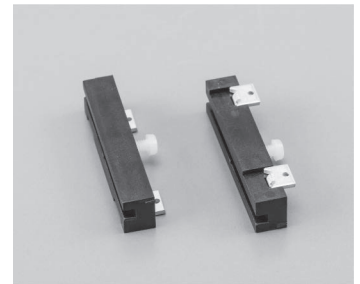


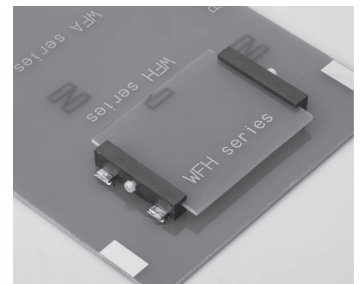
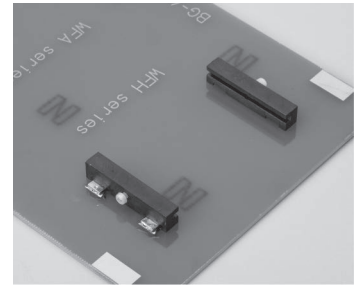
Fitting block for two-tiered installation of PC boards (SMT type)

WFH series (10pcs/pack)

- When placing an additional compact board on a surface mounting board, solder and fix this product to fix the additional board in parallel.
- Three types of adaptive PC board thickness, t1.6, t1.0 and t0.6 are available.
- This can be fit 3 mm above the PC board.
- Two types (with screw and without screw) are available.
- About with-screw type, the additional board can be fixed to prevent it moving.
- The type with through hole (WFA series) is also available.
- Material Resin part: PPS black (UL94V-0)
Metal part: Phosphor bronze
Screw part: Special polyamide resin ivory color (UL94HB)
- Finish: Gold plating over nickel base



■ Example of usage



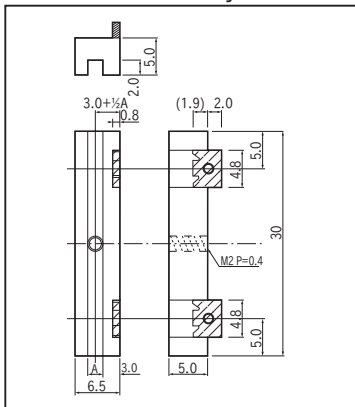
By tightening the screw, the PC board can be fixed. (-S type)

■ Part No.

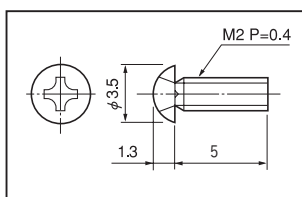
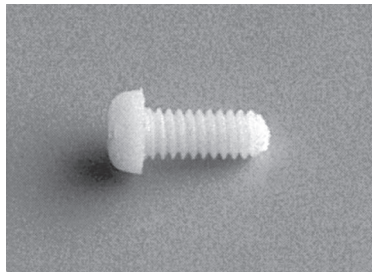
Part No.	A	Screw	Adaptive PC board thickness
WFH-1-1.6	1.7	Without	1.6
WFH-1-1.6-S	1.7	M2 × 5 screws	1.6
WFH-1-1.0	1.1	Without	1.0
WFH-1-1.0-S	1.1	M2 × 5 screws	1.0
WFH-1-0.6	0.7	Without	0.6
WFH-1-0.6-S	0.7	M2 × 5 screws	0.6

■ Dimension

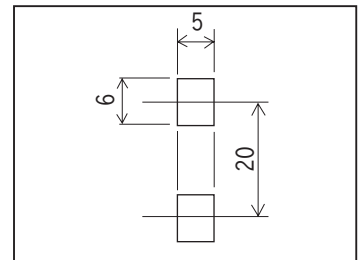
Main body



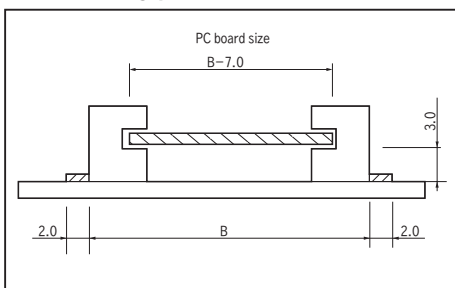
Screw part



■ Recommended land information



■ Reference drawing for fitting position



■ Instructions for use

Do not put copper foil on the both sides (2.5 mm from the edge face) of the PC board (the side for inserting to the groove of this product).