

Connector for surface mounting [HH-1 series]

- This is a super-small connector that can be fit on a surface mounting board.
- As signal lines can be separately taken out by using this product, collection of patterns are not necessary and the pattern design can be easily carried out.
- It can be fit vertically, horizontally and in any directions.
- Two types, bulk package type for manual operation and the type with embossed tape for automatic insertion, are available.

• Material

Body: Brass

Contact: Beryllium copper

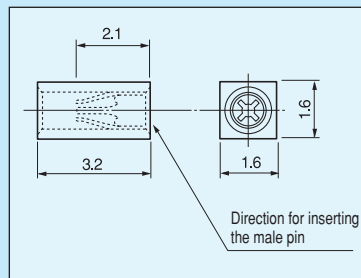
• Finish

HH-1-G:Body: Gold plating over nickel base

Contact part: Gold plating over nickel base

HH-1-S:Body: Tin plating over nickel base

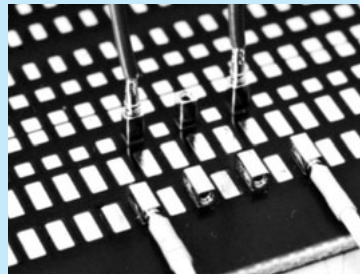
Contact part: Gold plating over nickel base



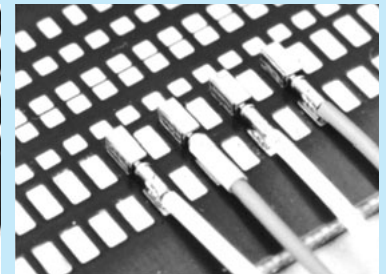
• Specification

Rated current	1A
Contact resistance	10mΩ or less
Operating temperature range	-40 to +125°C
Insertion/removal frequency	100 times or over
Insertion forces	70g or over
Removal forces	70g or over

- Adaptive male pin diameter: ϕ 0.45 to ϕ 0.6



When the male pin HJ-1 is used



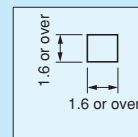
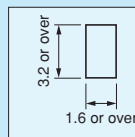
When HJ-1 and HH-1-R (metal lock fitting) are used

Part number

Part number	Package
HH-1-G	Bulk (100pcs/package)
HH-1-G-P	Magazine (100pcs/package)
HH-1-G-T	Reel (2000pcs/reel)
HH-1-S	Bulk (100pcs/package)
HH-1-S-P	Magazine (100pcs/package)
HH-1-S-T	Reel (2000pcs/reel)

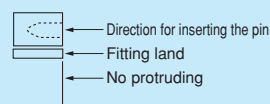
Recommended land diameter

- For horizontal fitting
- For vertical fitting



Instructions for use

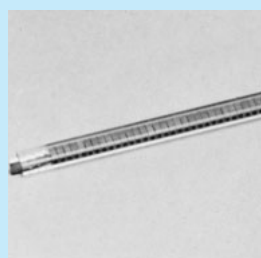
- Please pay attention to the direction for inserting the pin.
- In the case of vertical fitting, please pay special attention to creeping up of the flux and wash well.



Please design the fitting land in the direction of inserting to prevent protruding from HH-1. (To avoid creeping up of solder)

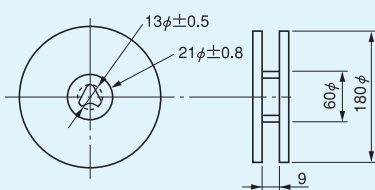


HH-1-□-T (tape-and-reel)



HH-1-□-P (with magazine)

Dimension of the reel



Dimension of the tape

