

# HK Series / Test Point for Auto Insertion

## Test Point for Auto Insertion [ HK-2 Series ] (3.2x1.6 type) (1000pcs/reel)

PAT

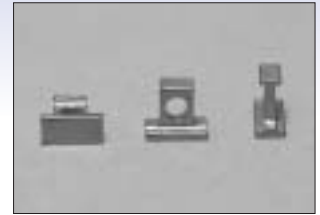
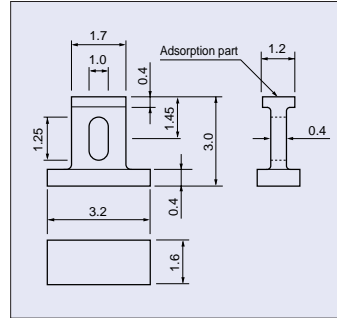
In the case of reflowing by cream solder, recommended mounting land diameter should be more than 1.6x3.2 to strengthen the bonding

Material.....Brass

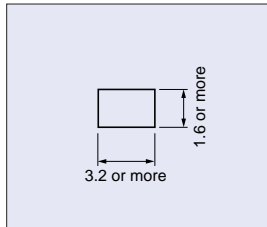
Finish..... HK-2-G .....Plated Au over Ni base

HK-2-S .....Plated Sn over Ni base

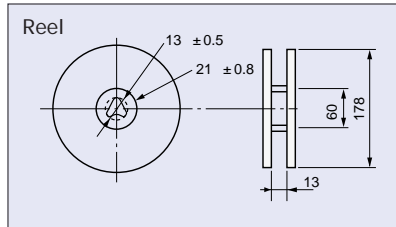
N/O	Package
HK-2-G	1000/reel
HK-2-S	1000/reel



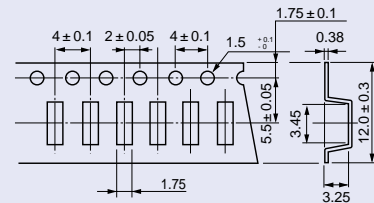
Recommended Land Diameter



Dimensions



Tape



## Test Point for Auto Insertion [ HK-3 Series ] (2x1.25 type)

PAT

Best use for small equipments.

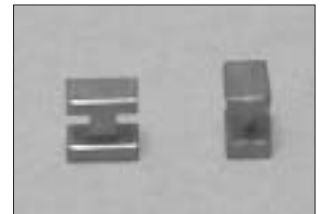
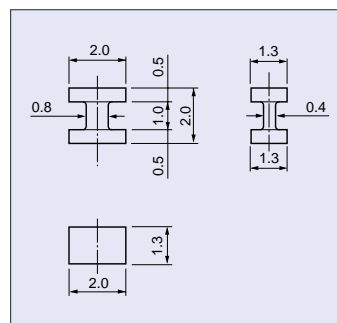
In the case of reflowing by cream solder, recommended mounting land diameter should be more than 2x1.25 to strengthen the bonding.

Material.....Brass

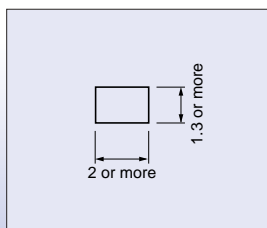
Finish..... HK-3-G .....Plated Au over Ni base

HK-3-S .....Plated Sn over Ni base

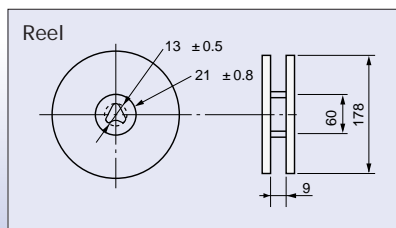
N/O	Package
HK-3-G-T	1500pcs/reel
HK-3-G	1000pcs/bulk
HK-3-S-T	1500pcs/reel
HK-3-S	1000pcs/bulk



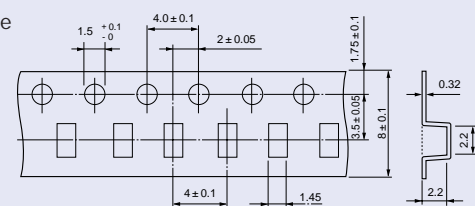
Recommended Land Diameter



Dimensions



Tape



**MAC8**

No. 1 distributor of MAC8

**SHINDENKIZAI Co., LTD.**

Contact

e-mail: sdk@mac8sdk.co.jp FAX: +81-3-3253-5965

[http://www.mac8sdk.co.jp/index\\_e.html](http://www.mac8sdk.co.jp/index_e.html)

# HK Series / Test Point for Auto Insertion

## Test Point for Auto Insertion [ HK-4 Series ] (1.2x1.0 type)

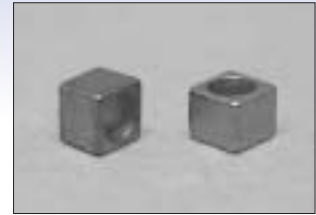
In the case of reflowing by cream solder, recommended mounting land diameter should be more than 1.3x1.1 to strengthen the bonding.

Can hook oscilloscope on the hole

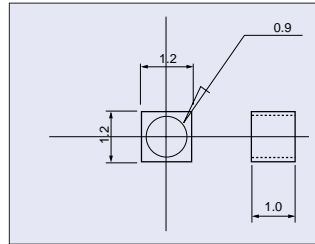
Material.....Brass

Finish..... HK-4-G..... Plated Au over Ni base

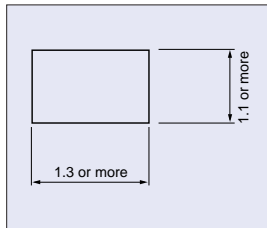
HK-4-S..... Plated Sn over Ni base



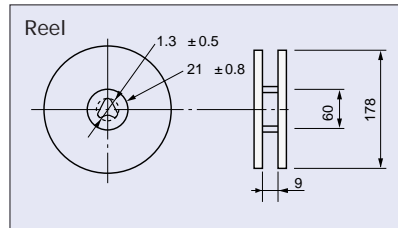
N/O	Package
HK-4-G-T	3000pcs/reel
HK-4-G	bulk 1000pcs/pack
HK-4-S-T	3000pcs/reel
HK-4-S	bulk 1000pcs/pack



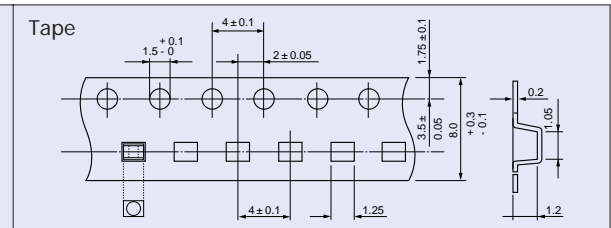
Recommended Land Diameter



Dimintions



Tape



## Test Point for Auto Insertion [ HK-5 Series ]

PAT

In the case of reflowing by cream solder, recommended mounting land diameter should be more than 1.25x2.5 to strengthen the bonding.

Size: 2.5x3.0

Operating Temperature..... - 40 ~ + 150°C

Material

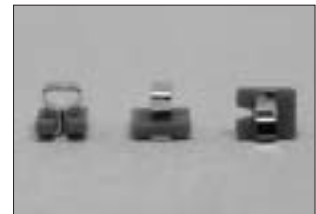
Pin .....Phosphor Bronze 0.2t

Plastic Part .....Fluorine Resin(UL94V-0)

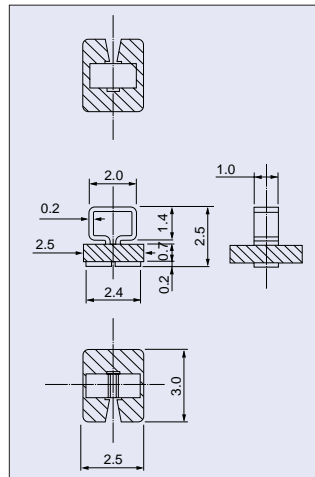
Finish..... HK-5-G..... Plated Au over Ni base

HK-5-S..... Plated Sn over Ni base

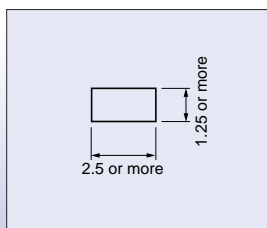
Color: Black, Brown, Red, Orange, Yellow, Green, Blue, Purple, Gray, White



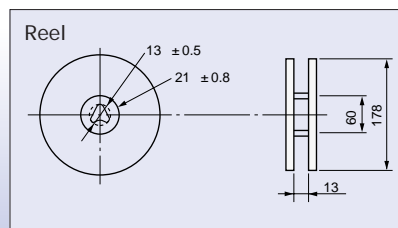
N/O	Package
HK-5-G	1000/reel
HK-5-S	1000/reel
HK-5-G-B	Bulk 1000/pack
HK-5-S-B	Bulk 1000/pack



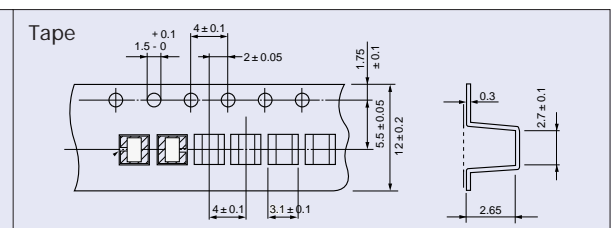
Recommended Land Diameter



Dimintions



Tape



**MAC8**

No.1 distributor of MAC8

**SHINDENKIZAI Co., LTD.**

Contact

e-mail: sdk@mac8sdk.co.jp FAX: +81-3-3253-5965

[http://www.mac8sdk.co.jp/index\\_e.html](http://www.mac8sdk.co.jp/index_e.html)