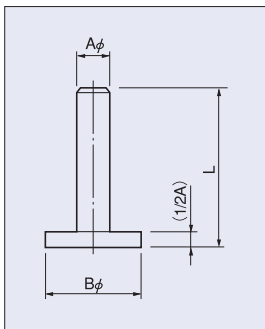
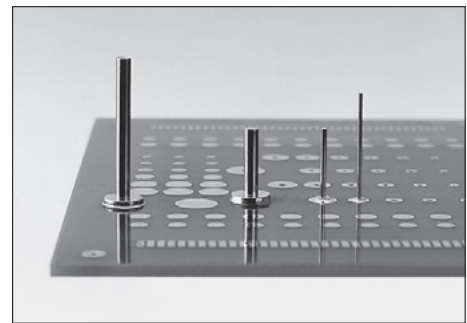


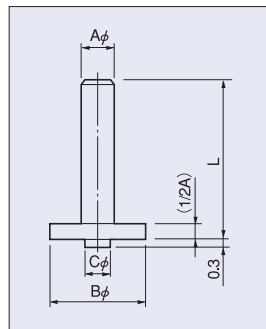
DH/DHS Series / Pin for Surface Mount (1000pcs/pack)

- Can be put on surface mount board.
- DHS series have pin to mount at right place.
- Material: DH-4 ~ 6, DHS-4 ~ 6...beryllium copper
DH-8 ~ 20, DHS-8 ~ 20...copper
- Finish: Au plated over Ni base
- Current Rating : DH(S)-4 - □ ... 2A
DH(S)-6 - □ ... 4A
DH(S)-8 - □ ... 5A
DH(S)-10 - □ ... 10A
DH(S)-12 - □ ... 13A
DH(S)-14 - □ ... 20A
DH(S)-20 - □ ... 30A



■ DH series

P/N	A	B	L
DH-4-5	0.45	1.2	5
DH-4-10	0.45	1.2	10
DH-4-15	0.45	1.2	15
DH-4-20	0.45	1.2	20
DH-6-5	0.6	1.8	5
DH-6-10	0.6	1.8	10
DH-6-15	0.6	1.8	15
DH-6-20	0.6	1.8	20
DH-8-5	0.8	2.3	5
DH-8-10	0.8	2.3	10
DH-8-15	0.8	2.3	15
DH-8-20	0.8	2.3	20
DH-10-5	1.0	3.0	5
DH-10-10	1.0	3.0	10
DH-10-15	1.0	3.0	15
DH-10-20	1.0	3.0	20
DH-12-5	1.2	3.5	5
DH-12-10	1.2	3.5	10
DH-12-15	1.2	3.5	15
DH-12-20	1.2	3.5	20
DH-14-5	1.4	4.0	5
DH-14-10	1.4	4.0	10
DH-14-15	1.4	4.0	15
DH-14-20	1.4	4.0	20
DH-20-5	2.0	5.5	5
DH-20-10	2.0	5.5	10
DH-20-15	2.0	5.5	15
DH-20-20	2.0	5.5	20



■ DHS Series

P/N	A	B	C	L
DHS-4-5	0.45	1.2	0.45	5
DHS-4-10	0.45	1.2	0.45	10
DHS-4-15	0.45	1.2	0.45	15
DHS-4-20	0.45	1.2	0.45	20
DHS-6-5	0.6	1.8	0.6	5
DHS-6-10	0.6	1.8	0.6	10
DHS-6-15	0.6	1.8	0.6	15
DHS-6-20	0.6	1.8	0.6	20
DHS-8-5	0.8	2.3	0.6	5
DHS-8-10	0.8	2.3	0.6	10
DHS-8-15	0.8	2.3	0.6	15
DHS-8-20	0.8	2.3	0.6	20
DHS-10-5	1.0	3.0	0.6	5
DHS-10-10	1.0	3.0	0.6	10
DHS-10-15	1.0	3.0	0.6	15
DHS-10-20	1.0	3.0	0.6	20
DHS-12-5	1.2	3.5	0.6	5
DHS-12-10	1.2	3.5	0.6	10
DHS-12-15	1.2	3.5	0.6	15
DHS-12-20	1.2	3.5	0.6	20
DHS-14-5	1.4	4.0	0.8	5
DHS-14-10	1.4	4.0	0.8	10
DHS-14-15	1.4	4.0	0.8	15
DHS-14-20	1.4	4.0	0.8	20
DHS-20-5	2.0	5.5	0.8	5
DHS-20-10	2.0	5.5	0.8	10
DHS-20-15	2.0	5.5	0.8	15
DHS-20-20	2.0	5.5	0.8	20

■ Recommended Land Diameter

■ DH series

	Aφ
DH-4	2.0
DH-6	2.5
DH-8	3.0
DH-10	3.5
DH-12	4.0
DH-14	4.5
DH-20	6.0

■ DHS series

	Aφ	Bφ ^{+0.1} ₋₀
DHS-4	2.0	0.5
DHS-6	2.5	0.7
DHS-8	3.0	0.7
DHS-10	3.5	0.7
DHS-12	4.0	0.7
DHS-14	4.5	0.9
DHS-20	6.0	0.9

※ Cream Solder should cover all land.